

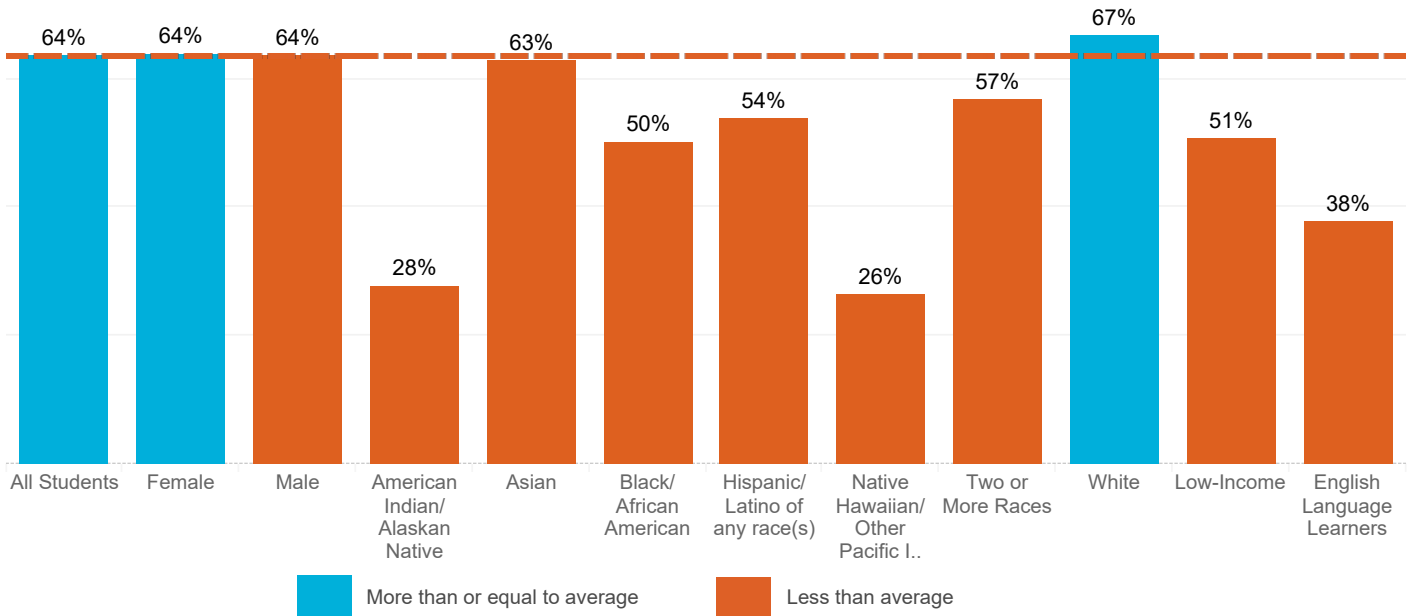
Kindergarten Math Ready (2022-23)

Region Eastern

64% of 6,325 Eastern region children entering kindergarten are math ready compared to **66% of 74,583** children statewide. For many children of color, low-income children, and children who speak a language other than English, we see greater disparities in math skills. Additional details can be found here:

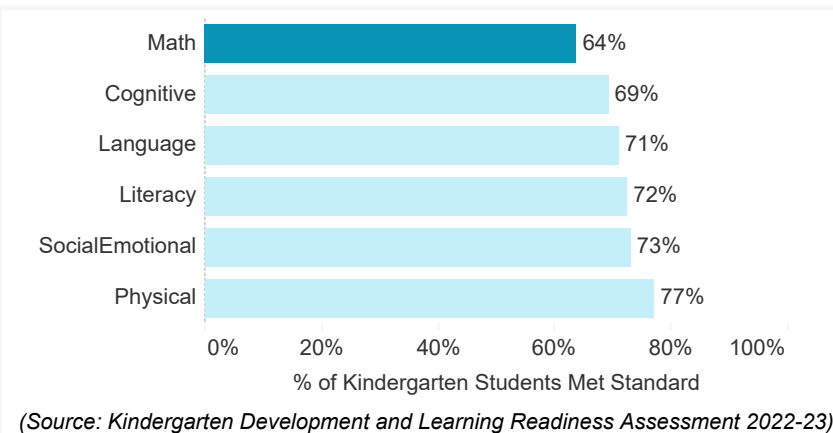
<https://erdc.wa.gov/data-dashboards/early-learning-feedback-report-0>

The chart below shows the percentage of math-ready kindergartners by gender, race/ethnicity and whether they are English language learners, or in low-income households. For historical comparison (2015-2022), hover your mouse over a bar.



Math Scores Lag from the Start

Early math skills predict later math and literacy outcomes¹. This graph shows that for kindergartners, math scores lag behind. Improving math score requires investment in early childhood education before kindergarten.



Access To Early Learning

We believe we see these equity problems because of inequitable investments in young children's care and education. In the Eastern region access to Early Learning is not equitable: 37% of children with all parents in the workforce do not have access to child care. More information can be found here:

<https://www.dcyf.wa.gov/practice/oiaa/reports/early-learning-dashboards/child-care-need-supply-data>

* **DataSuppression** - OSPI uses four methods, applied simultaneously, to public reporting. For details on those methods see: <https://www.k12.wa.us/sites/default/files/public/StudentInformation/SuppressionRulesforPublicReporting.pdf>

¹Math predicts later achievement: <https://www.apa.org/pubs/journals/releases/dev-4361428.pdf>

FAFSA COMPLETION (2022-23)

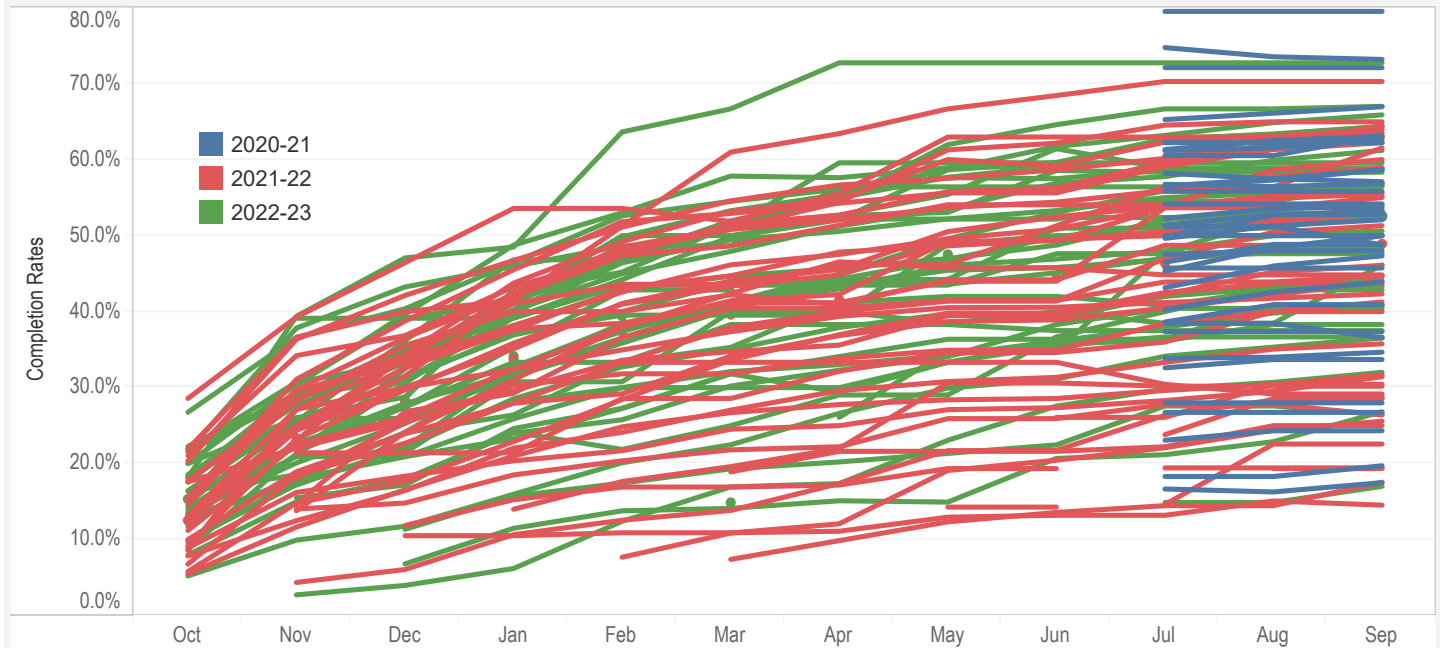
Benton-Franklin	Eastern WA /Spokane	North Central	Northwest	Olympic	Pacific Mountain	King County	Snohomish	South Central	Southwest	Tacoma-Pierce
-----------------	----------------------------	---------------	-----------	---------	------------------	-------------	-----------	---------------	-----------	---------------

Reset Filters

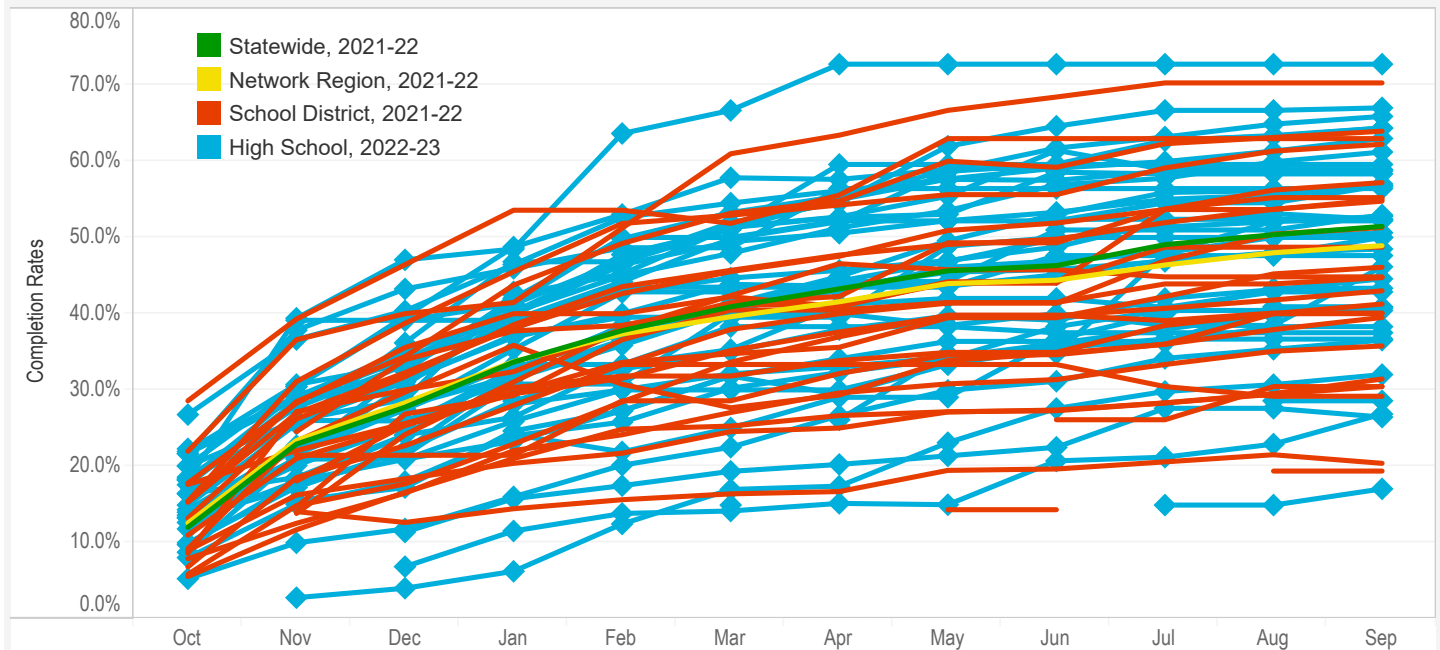
School District: All High School: All

All

Comparing FAFSA completion rates, by month, from the previous year and the current year.



Comparing current High School FAFSA completion rates to prior years in the surrounding region.



*FAFSA completion rates can decline if students transfer, or schools in a district are delayed in reporting completions.

Additional Links:

WSAC FAFSA Completion Portal: <https://portal.wsac.wa.gov/fafsacompletion/>

WSAC FAFSA Completion Dashboard: <https://public.tableau.com/app/profile/wsac/viz/WASStateFAFSACompletionDashboard/StateFAFSACompletion>

Credential Attainment: Eastern Region

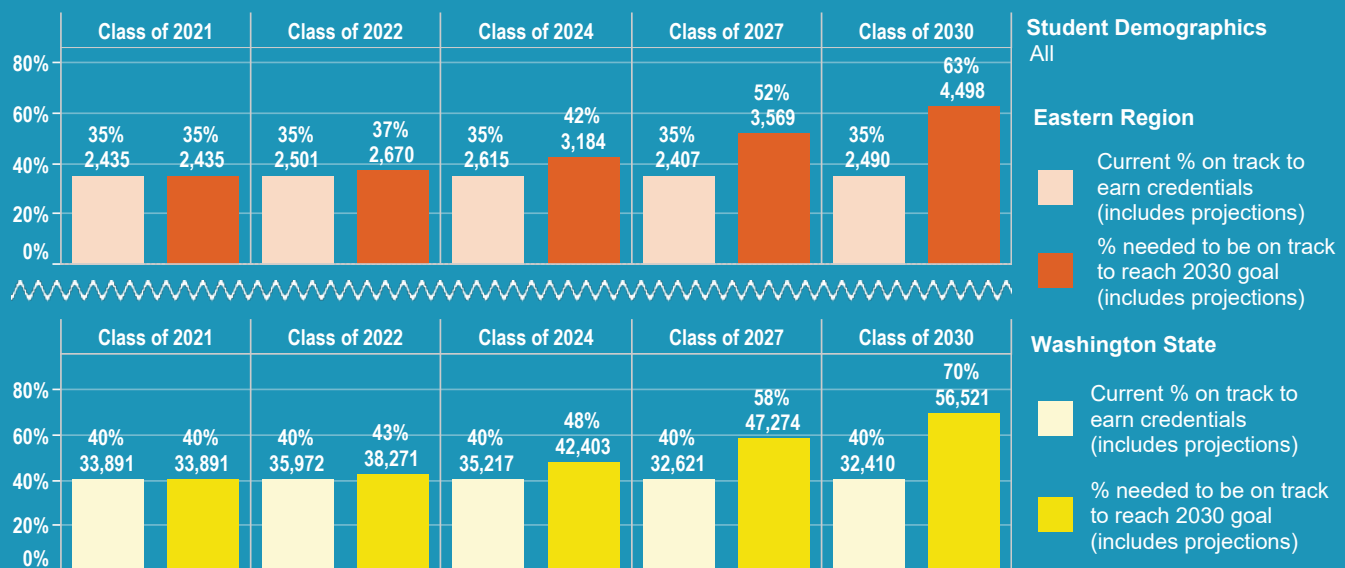
Region: Eastern

By 2030, 72% of high-demand, family-sustaining wage jobs available in the Eastern region will require a postsecondary degree or credential; 44% of those jobs will be STEM or STEM literacy-based occupations. However, students in the Eastern region are not equitably or adequately prepared to take advantage of these opportunities, with only 35% of the high school cohort of 2021 projected to be on track to attain postsecondary credentials. We aim to close those gaps and increase the number of our local students who gain access to jobs that pay a family wage and have shown strong resilience during times of economic uncertainty.



223 More Credentials Needed Each Year

The below chart displays the # of students in the Eastern region who are projected to be on track to earn credentials and how this compares to the 2030 goal to meet local labor market demand. To meet this goal, 223 students each year need to be on track to earn credentials by age 26.



45%

of the 2021 high school cohort have enrolled in a postsecondary credential pathway.



35%

of the 2021 high school cohort is on track to earn a postsecondary credential by age 26.



Systems Input: Credentials & Employment

Over 70% of family-wage jobs in our state require a postsecondary credential (certificate, degree, or apprenticeship) but our postsecondary system lacks the capacity in programs that meet the needs of the labor market.

24%

of credentials offered in the region match labor market demand. Employers must look outside of the region to fill the gap in qualified workers.



Explore more WA occupation data at www.washingtonstem.org/cori.

Family-sustaining wage jobs are determined based on the assumption that two working adults are contributing to a household with two children (one infant and one child aged 5 to 12 years), using the statewide family-wage average from the University of Washington Self-Sufficiency Standard, 2023. For households with one adult and two children, the wage threshold is doubled.

Credential refers to all forms of postsecondary education and training, including registered apprenticeships, 1-year certificates, 2-year degrees, and 4-year degrees.

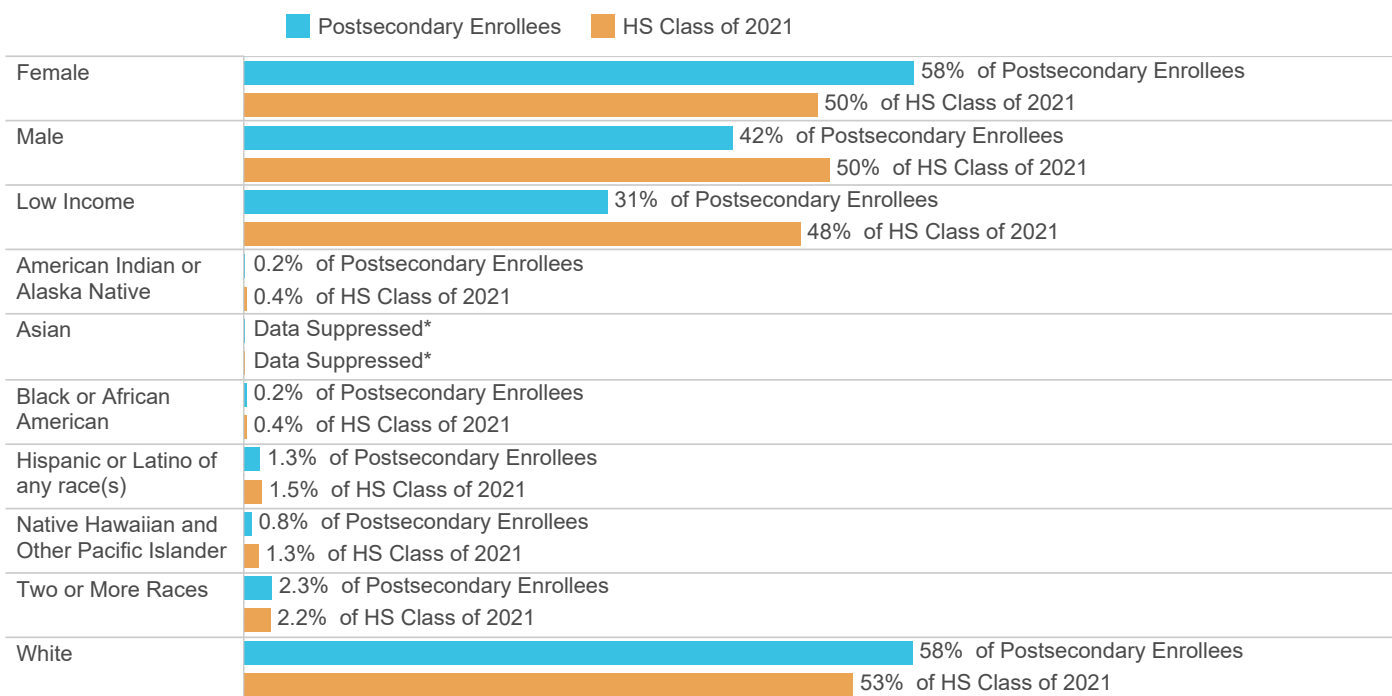
Explore more Washington career and credential data at:

www.washingtonstem.org/labor-market

Enrollment Representation

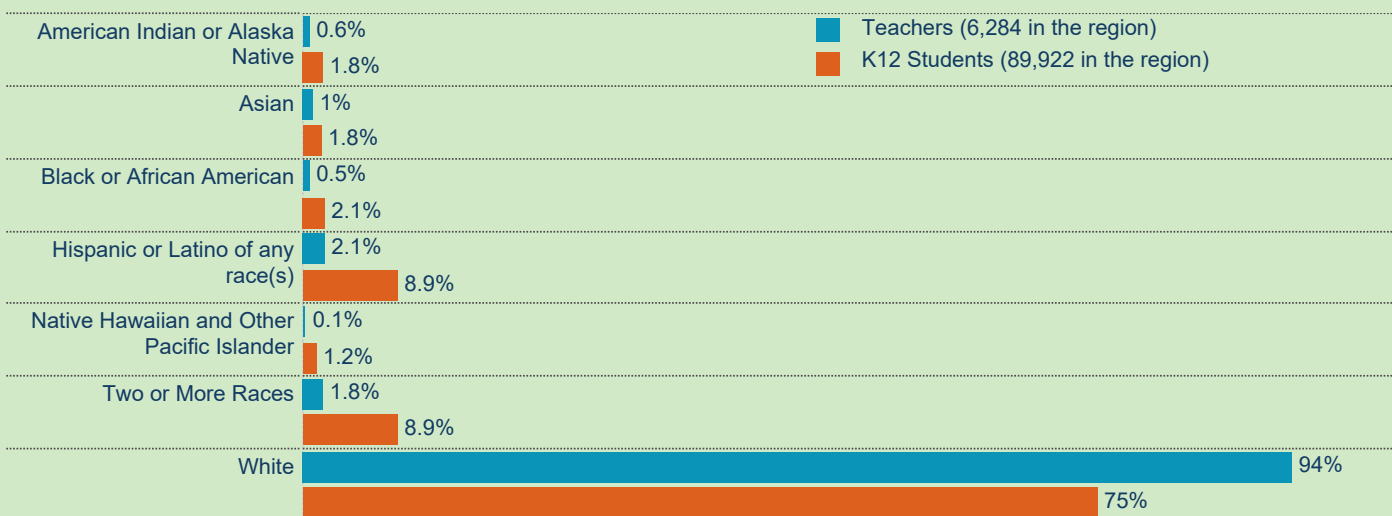
Region Eastern

Of the high school class of 2021, do the students who have enrolled in postsecondary equitably represent the overall demographics of their cohort?



Systems Input: Teacher Diversity

Diversifying teacher demographics has shown to improve outcomes for all students. We would expect this to result in a more equitable representation of students enrolling in postsecondary.



Systems Input: Maximum Representation in data collection

Historically, students of two or more races, ethnicity or Indigeneity have been forced to choose only one when providing demographic data. By suppressing groups of students and not allowing students to identify as more than one race, Indigeneity and ethnicity results in hiding disparities and limiting the ability to address them. Maximum representation of race, Indigeneity and ethnicity in data is essential for mitigating bias, making accurate decision and identifying disparities and enhancing inclusivity.

*Data suppressed by OSPI and ERDC, see FAQ for more details.

Postsecondary Enrollment and Completion

Region Eastern

Student Group All

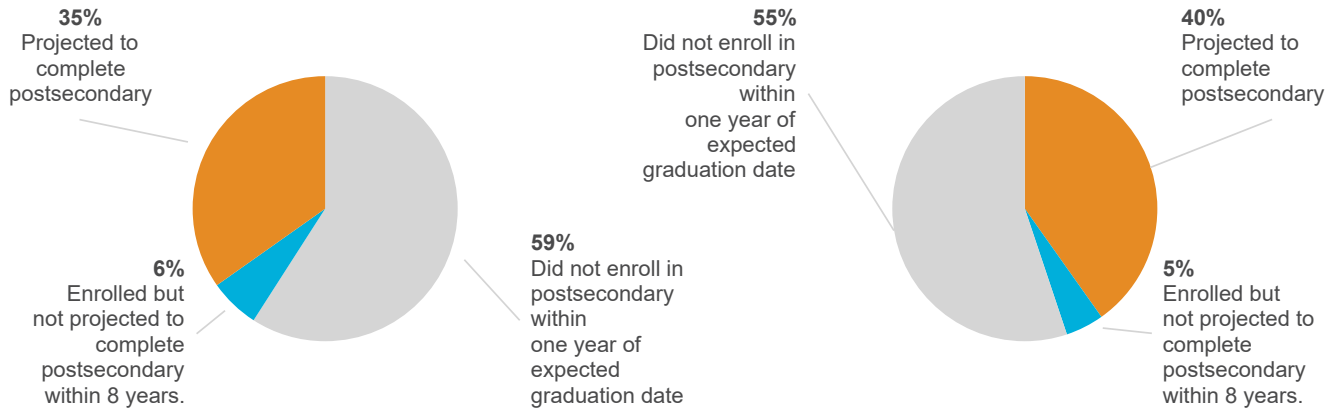
What percent of originating* students from the 2021 high school cohort enrolled, and what percent are projected to enroll and complete a postsecondary credential?

Eastern Region - HS Class of 2021

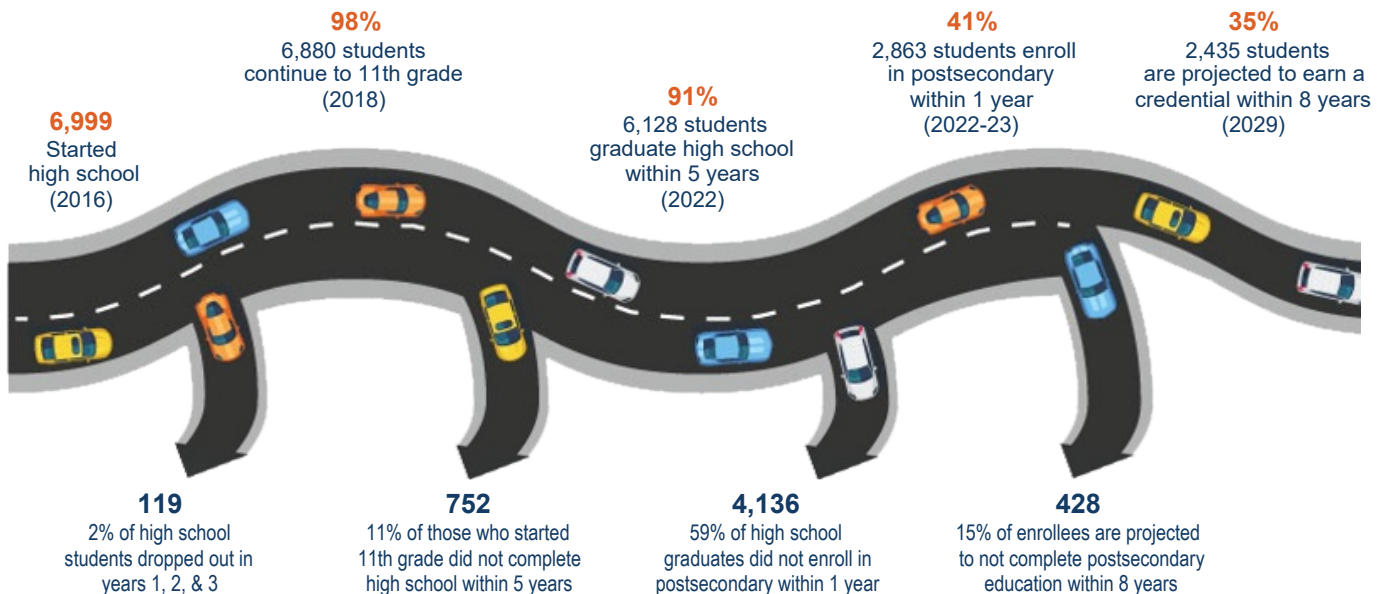
6,999 students began 9th grade in the Eastern region.

Statewide - HS Class of 2021

84,321 students began 9th grade statewide.



Class of 2021 Detours on the Path to Postsecondary Credentials



*Originating 2021 high school students refers to the all students in the 2021 cohort from the state of Washington, or region within the state of Washington. The cohort includes all students who would be expected to graduate high school in 2021 upon entering ninth grade. To see this information for only 2021 high school graduates visit <https://erdc.wa.gov/data-dashboards/high-school-graduate-outcomes>

Systems Inputs: Availability of Dual Credit

49%

of schools in the region offer dual credit in 6 or more subjects

TBD*

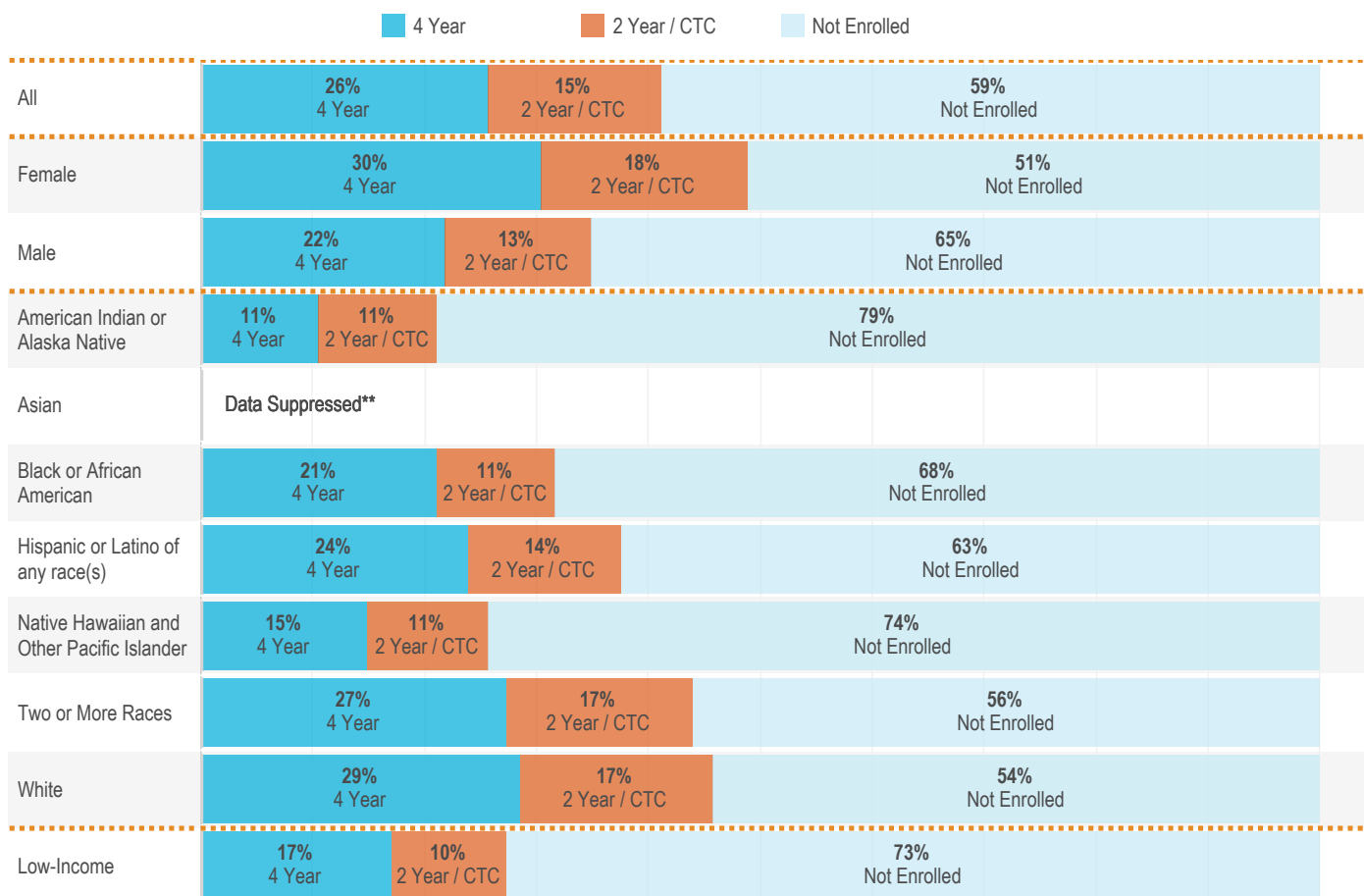
% of schools with multiple concentrated dual credit pathways

* We are determining availability of dual credit courses and career pathways programs by type and subject area in this region

Postsecondary Enrollment Demographics

Region Eastern

What percent of the originating* 2021 high school students enrolled in postsecondary within one year of high school graduation?



*Originating 2021 high school students refers to the all students in the 2021 cohort from the state of Washington, or region within the state of Washington. The cohort includes all students who entered ninth grade and would be expected to graduate high school in 2021.

To see this information for only 2021 high school graduates visit <https://erdc.wa.gov/data-dashboards/high-school-graduate-outcomes>

**For more information about the suppression of student demographic counts for high school graduates (OSPI) and postsecondary enrollment (ERDC) see the following policies.

OSPI Suppression Rules - <https://www.k12.wa.us/sites/default/files/public/StudentInformation/SuppressionRulesforPublicReporting.pdf>

ERDC Privacy Plan - <https://erdc.wa.gov/sites/default/files/ERDC%20Privacy%20Plan%20%28updated%205.20.21%29.pdf>

Systems Input: FAFSA Completion Rates

70%

16 of 23 districts in the region have FAFSA completion rates below the statewide average (46%) thru May 2023.

TBD*

Schools implementing Financial Aid best practices

* Data collection in progress

Systems Input: Financial Aid Best Practices

- Know your schools data
- Have a data person in each school
- Track individual students progress
- Access the FAFSA portal <https://portal.wsac.wa.gov/>
- Utilize tools to reach students. Examples include:
 - Text bots for communicating with students
 - Communicating with families in their home language
 - Consulting with local tribes

Region
Eastern

School District
All

High School
All

Student Group
All

Of the class of 2021 high school students that enroll in postsecondary, where do they enroll?

*Enrollment totals vary based on the size of the sample. This is due to OSPI and ERDC data suppression policies intended to protect student privacy.

Network Region	High School	Postsecondary Enrollment Level	Postsecondary Organization	Enrollees by Organization	% of All Enrollees	% of All School District Enrollees	% of All Region Enrollees
Eastern	Central Valley High School	2 Year / CTC	Spokane Community	50	9%	9%	7%
			Spokane Falls	25	4%	5%	7%
			Private/OOS - 2Yr/CTC	6	1%	1%	1%
			Other 2Yr/CTC	6	1%	1%	1%
		4 Year	Private/OOS - 4Yr	112	19%	16%	11%
			EWU	53	9%	9%	7%
			WSU	28	5%	3%	3%
			UW	19	3%	2%	2%
			Other 4yr	2	0%	2%	0%
		Not Enrolled	Not Enrolled	269	46%	52%	59%
	University High School	2 Year / CTC	Spokane Community	34	10%	9%	7%
			Spokane Falls	19	5%	5%	7%
			Private/OOS - 2Yr/CTC	2	1%	1%	1%
			Other 2Yr/CTC	2	1%	1%	1%
		4 Year	Private/OOS - 4Yr	52	15%	16%	11%
			EWU	34	10%	9%	7%
			WSU	6	2%	3%	3%
			Other 4yr	6	2%	2%	0%
			UW	5	1%	2%	2%
		Not Enrolled	Not Enrolled	194	55%	52%	59%
	Cheney High School	2 Year / CTC	Spokane Falls	16	5%	5%	7%
			Spokane Community	16	5%	5%	7%
			Private/OOS - 2Yr/CTC	4	1%	1%	1%
			Other 2Yr/CTC	1	0%	0%	1%
		4 Year	Private/OOS - 4Yr	39	13%	12%	11%
			EWU	30	10%	9%	7%
			UW	8	3%	3%	2%
			WSU	7	2%	2%	3%
			WWU	1	0%	0%	1%
			Other 4yr	1	0%	0%	0%
		Not Enrolled	Not Enrolled	190	61%	63%	59%
	Three Springs High Sch..	Not Enrolled	Not Enrolled	23	88%	63%	59%
	Colfax High School	2 Year / CTC	Spokane Falls	2	4%	4%	7%
			Spokane Community	2	4%	4%	7%
			Private/OOS - 2Yr/CTC	2	4%	4%	1%
			Other 2Yr/CTC	2	4%	4%	1%
		4 Year	WSU	6	12%	12%	3%
			Private/OOS - 4Yr	5	10%	10%	11%
			UW	2	4%	4%	2%
			Other 4yr	2	4%	4%	0%
			EWU	2	4%	4%	7%
		Not Enrolled	Not Enrolled	30	61%	61%	59%