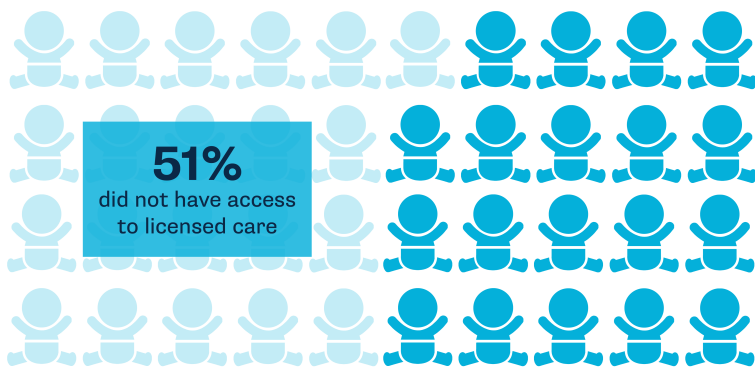


EARLY LEARNING & CARE

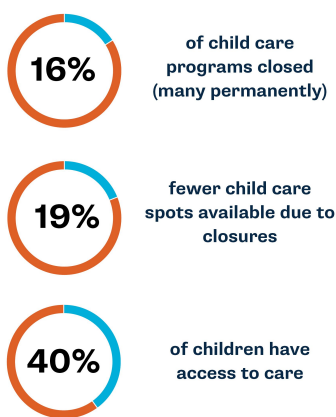
WHERE HISTORIC UNDERINVESTMENT
MEETS NATIONAL HEALTH CRISIS

Early Care in Washington State Prior to COVID-19

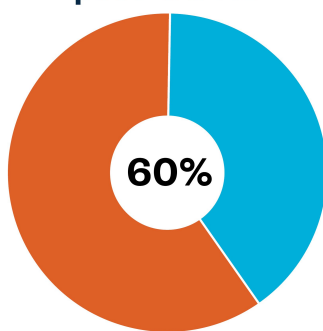


314,000 children under age 5
with all caregivers working

IMPACT OF COVID-19



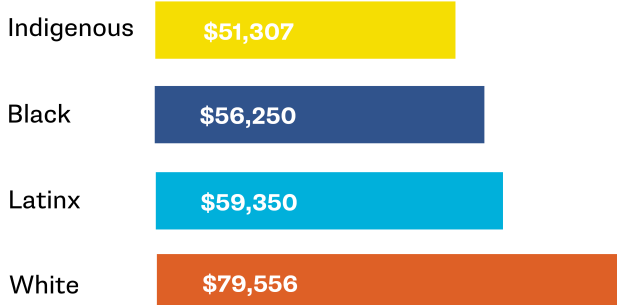
Children without access to care post-COVID



THE PANDEMIC HAS FURTHER REDUCED THE
NUMBER OF AVAILABLE CARE OPTIONS AND LEFT
EVEN MORE FAMILIES WITHOUT CARE.

RACIAL DISPARITIES

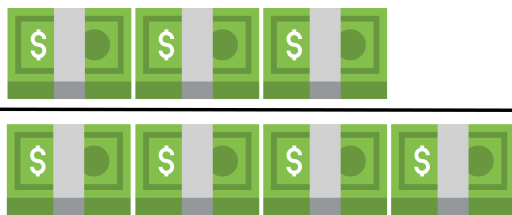
Income disparities put families of color on unequal
ground when searching and paying for care.



Washington statewide average yearly income by race/ethnicity

WOMEN SHOULD THE BURDEN

Income disparities also impact women. In
Washington state, women earn only \$3.00 for
every \$4.00 earned by men.



LEARN MORE



WWW.WASHINGTONSTEM.ORG