

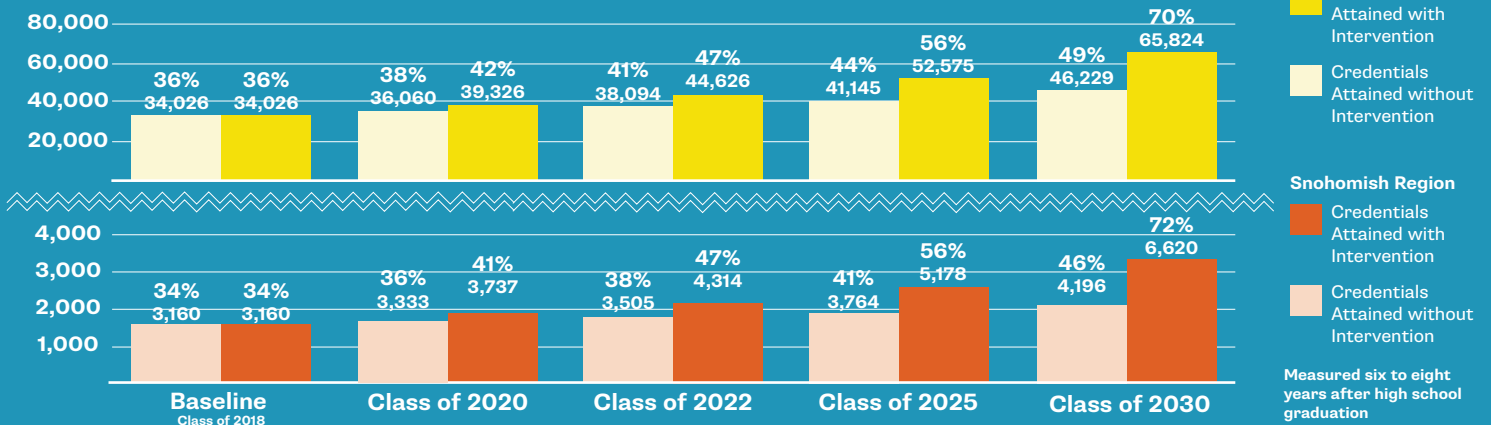


# STEM BY THE NUMBERS: SNOHOMISH REGION

The Snohomish Region is home to growing information and technology, healthcare, engineering, aerospace, life sciences, and construction industries, spanning from Stanwood to Lynnwood. The region is made up of 14 school districts supported by the Snohomish STEM Network. The Network's business, education, and community partners are working to close credential attainment gaps, especially for students of color and students from low-income families. They aim to increase the number of local students who become computer and IT professionals, construction and trades professionals, engineers, and healthcare professionals, which combined have 3,241 annual projected openings over the next five years.

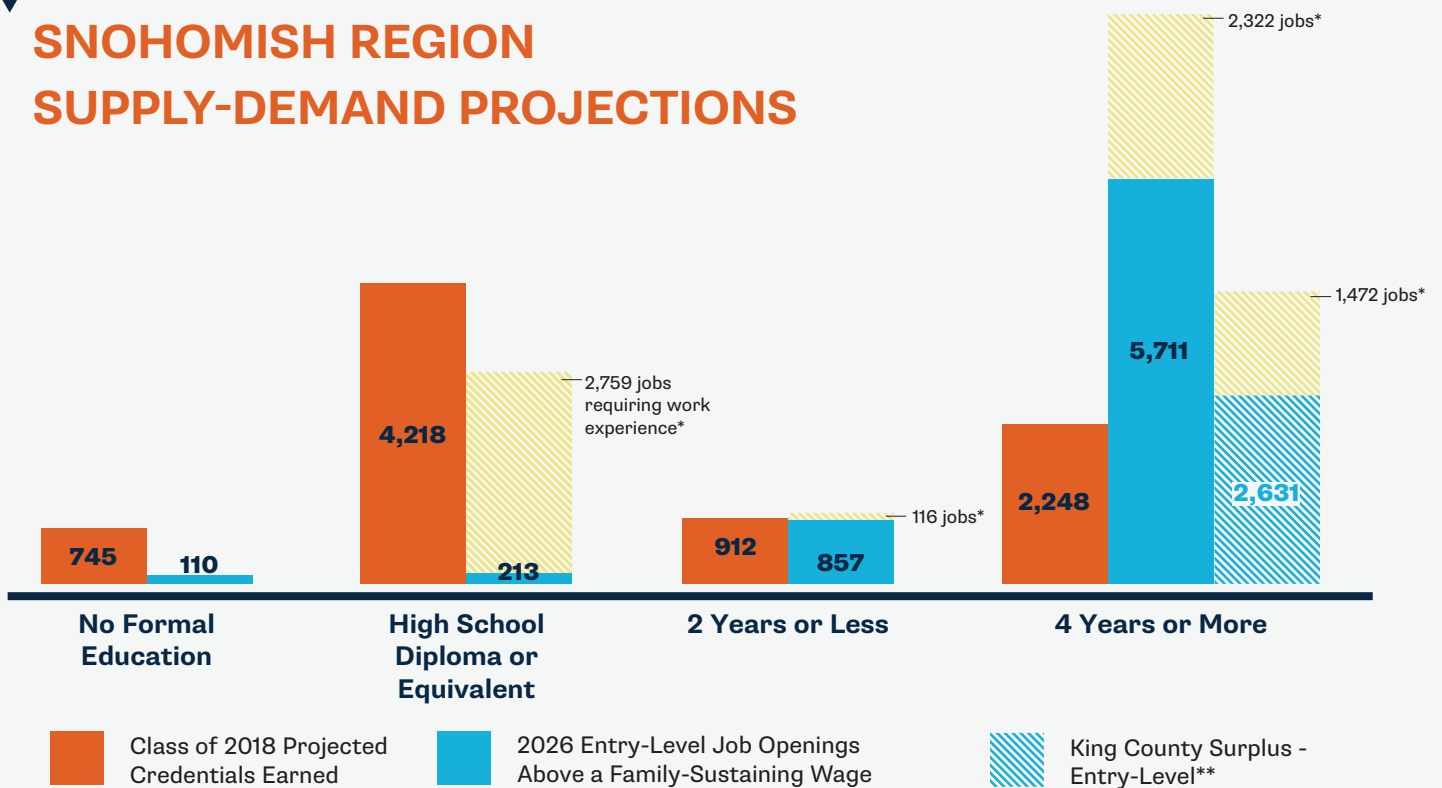


## 288 MORE CREDENTIALS PER YEAR = REGION ON TRACK



# THE OPPORTUNITY: A STRONG DEMAND FOR STEM TALENT

## SNOHOMISH REGION SUPPLY-DEMAND PROJECTIONS



By supporting more students to be on track to earn a high-demand credential, the Snohomish STEM Network and its partners will ensure that up to 6,891 family-sustaining\*\*\* (those that pay a regionalized wage of \$59,134 or more a year) are available to local young adults looking to start their career in the Snohomish Region.

\*Jobs requiring related work experience, and/or on-the-job training, would generally not be immediately available to high school graduates and be more competitive with a greater number of eligible applicants.

\*\* The King County surplus represents a proportion of the surplus jobs that could be supplied by students from the Snohomish Region. The surplus is the result of fewer King County originating students than annual projected job openings in the region.

\*\*\* Family-sustaining regionalized wage is defined as the full-time wage needed to support a household of 2 adults (1 working) and 1 child, using the MIT Living Wage Calculator.



## TEACHER EXTERNSHIPS BRING INDUSTRY EXPERIENCE DIRECTLY TO STUDENTS

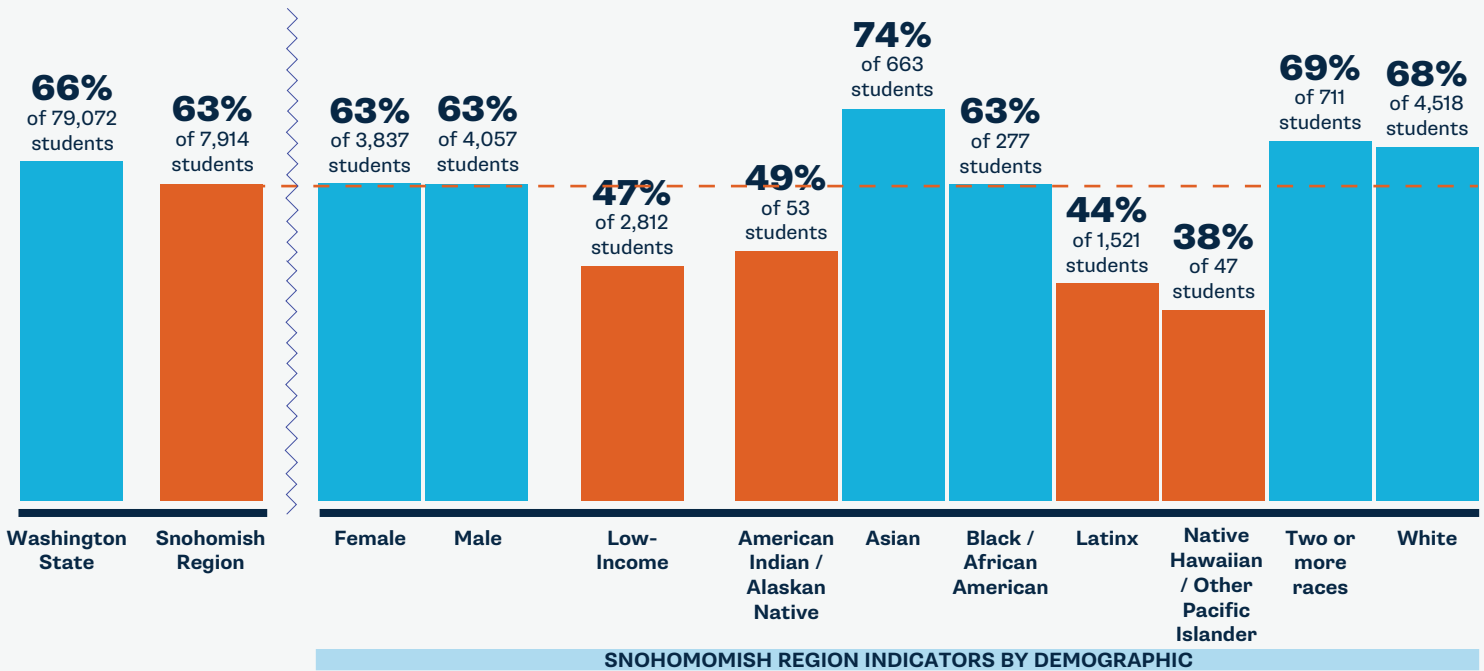
The Washington Alliance for Better Schools (WABS) STEM Teacher Externship program gives local teachers the chance to gain valuable, hands-on professional experience through industry placements. Teacher Externs bring engaging, real-world STEM applications to their classrooms and help students understand career opportunities and pathways. Businesses such as the Boeing Company, Snohomish PUD, and SEA-LECT Plastics, also have a unique opportunity to help develop a qualified pipeline of future employees prepared to meet tomorrow's challenges.

# SNOHOMISH REGION K-12 STEM INDICATORS BY DEMOGRAPHIC

## KINDERGARTEN MATH READY (2018)

**63% of 7,914** Snohomish Region children entering kindergarten are math ready compared to **66% of 79,072** children statewide.

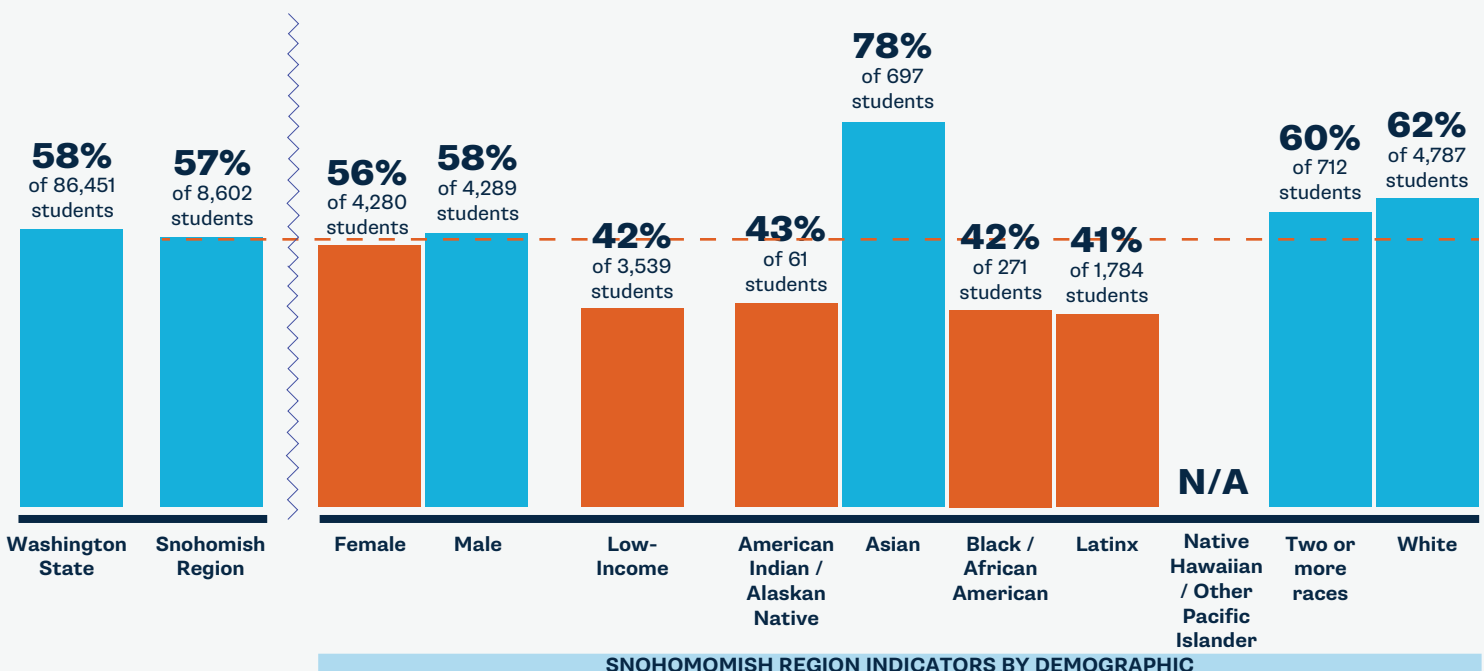
More than or equal to average of comparison  
Less than average of comparison



## 3RD GRADE MATH (2017)

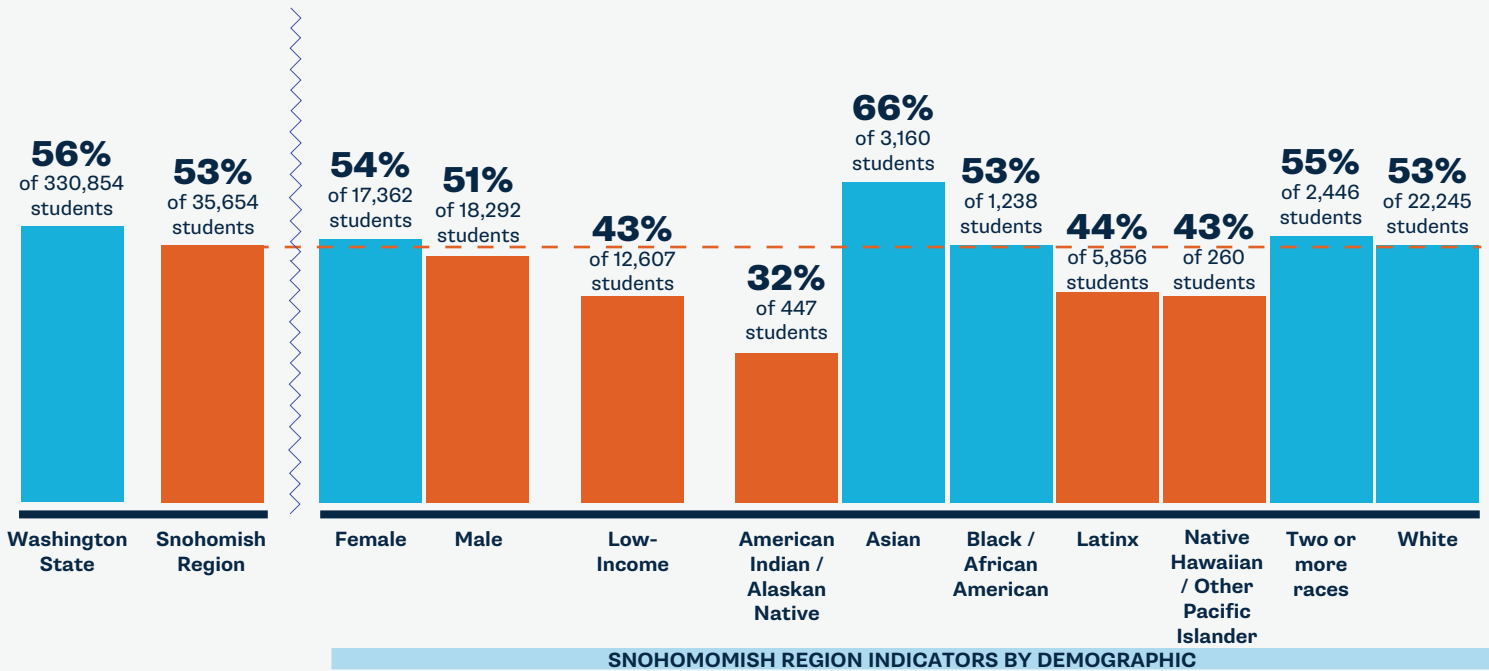
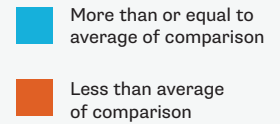
**57% of 8,602** of Snohomish Region third graders meet grade level math standards compared to **58% of 86,451** third graders statewide.

More than or equal to average of comparison  
Less than average of comparison



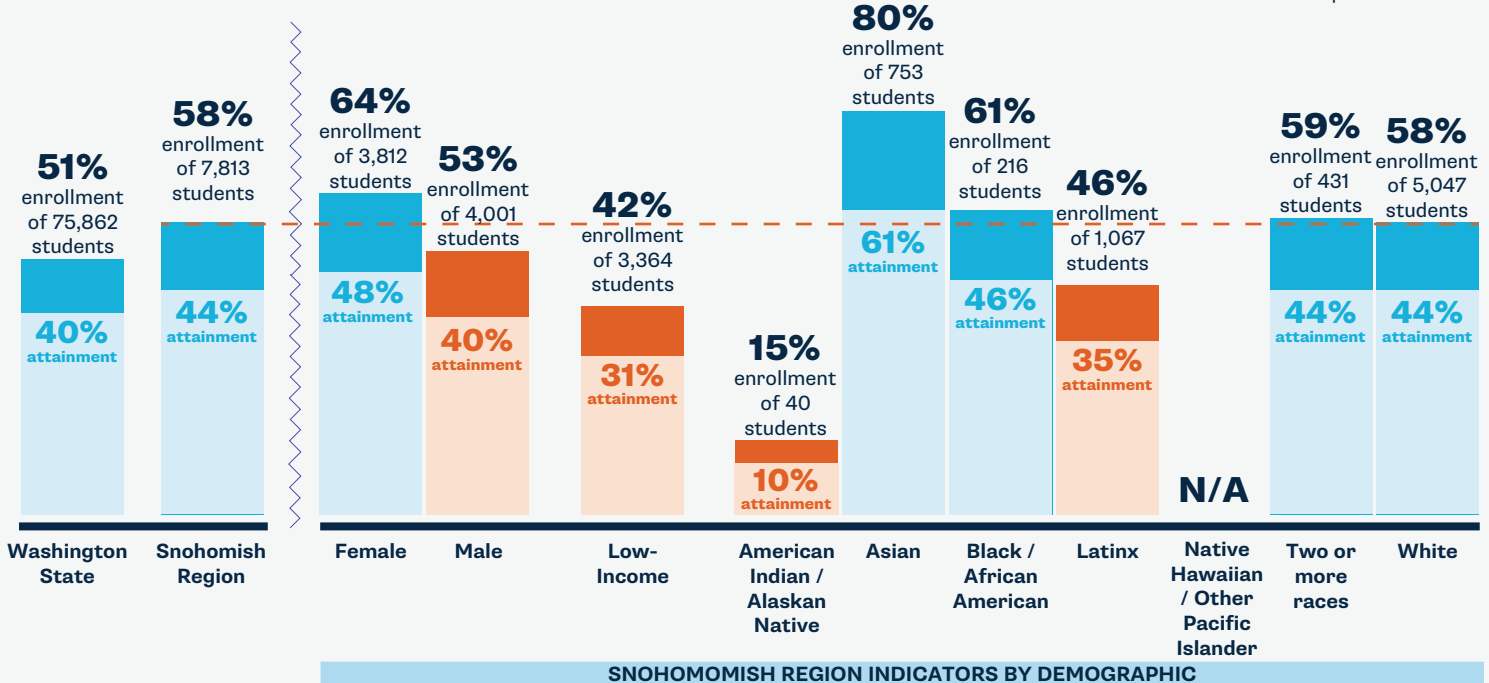
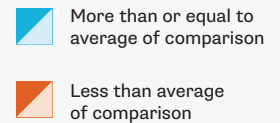
## DUAL CREDIT (2017 9-12TH GRADERS)

53% of 35,654 Snohomish Region high schoolers complete at least one dual credit course compared to 56% of 330,854 youth statewide.



## CREDENTIAL ENROLLMENT/ATTAINMENT (CLASS OF 2016)

58% of 7,813 of the originating ninth graders in the Snohomish Region enroll in a postsecondary program and 44% of those originating ninth graders earn a credential by age 26.



Data citations and region-by-region analyses will be posted at [www.washingtonstem.org/STEMbythenumbers](http://www.washingtonstem.org/STEMbythenumbers).

For more information about early STEM and career pathways work in the Snohomish Region, contact Snohomish STEM Network Director Angie Sievers, [angies@snohomishstem.org](mailto:angies@snohomishstem.org).



# SNOHOMISH REGION STEM INDICATORS

## Ready for Kindergarten

While 63 percent of all Snohomish Region kids are math ready by kindergarten, high-quality early learning opportunities need to be more accessible to families of color and those that are lower-income to close math-readiness gaps.

**TBD** we are determining availability of high-quality early learning for families and supports for professionals in this region

**63%** of Snohomish Region children entering kindergarten are math ready

## K-12 STEM Learning

Between kindergarten and third grade, math-readiness and skills gaps widen for many students, which is correlated with success in related areas of study. School districts need resources and assistance to remove barriers and create opportunities in STEM for all students.

**TBD** we are determining the STEM indicators for each school district in this region in partnership with LASER

**57%** of Snohomish Region third graders meet grade level math standards

## Secondary Pathways

While students in the Snohomish Region are overall less likely to complete dual credit\*\* courses than their peers across the state, students of color and low-income students experience reduced access to and completion of these courses compared to their peers.

**TBD** we are determining availability of dual credit courses and career pathways programs by type and subject area in this region

**53%** of Snohomish Region high schoolers complete at least one dual credit course

\*\*Dual credit programs give students the opportunity to earn high school and college credit simultaneously. Completion of dual credit coursework is highly correlated with higher education enrollment and completion.

## Credential Enrollment/Attainment

Of the originating ninth graders across the state, 51 percent enroll and 40 percent complete a credential. While Snohomish Region students enroll and complete at comparable rates, the region is working to expand credential pathways capacity to close opportunity gaps for key student groups.

**TBD** we are determining local higher education and career training program capacity in this region

**58%** of the originating ninth graders in the Snohomish Region enroll in a postsecondary program and 44 percent of those originating ninth graders earn a credential by age 26.



STEM by the Numbers is a series of regional reports which examines data that tells us about Washington students' access to credentials and family-sustaining jobs. Together with our partners, we are advocating for and developing regionalized, cross-sector, and longitudinal data. We highlight student outcomes above, and in future publications we will report on systems indicators, like high school course offerings and availability of STEM professional learning and supports.

Data citations and region-by-region analyses will be posted at [www.washingtonstem.org/STEMbythenumbers](http://www.washingtonstem.org/STEMbythenumbers).

For more information about early STEM and career pathways work in the Snohomish Region, contact Snohomish STEM Network Director Angie Sievers, [angies@snohomishstem.org](mailto:angies@snohomishstem.org).

# REGIONAL TOP INDUSTRIES AND STEM JOBS

## HEALTHCARE PROFESSIONALS

REGISTERED NURSE & MEDICAL ASSISTANT

Annual # of Openings: 505

Credential: Certificate → Bachelor's

Average Regional Wage: \$68,149 - \$90,514

## CONSTRUCTION & TRADES PROFESSIONALS

Annual # of Openings: 907

Credential: Apprenticeship

Average Regional Wage: \$62,359 - \$89,796

## ENGINEERS

Annual # of Openings: 633

Credential: Bachelor's

Average Regional Wage: \$85,653 - \$143,360

## COMPUTER & IT PROFESSIONALS

Annual # of Openings: 574

Credential: Certificate → Bachelor's

Average Regional Wage: \$74,625 - \$137,058

## LIFE SCIENCES PROFESSIONALS

Annual # of Openings: 140

Credential: Associate's → Doctorate

Average Regional Wage: \$60,886 - \$95,725

## K-12 EDUCATORS

Annual # of Openings: 547

Credential: Bachelor's

Average Regional Wage: \$68,623 - \$70,023

## EVERETT STUDENTS LEARN SUSTAINABLE LANDSCAPING

Everett's Jackson High School Green Team participated in Puget Sound Starts at my School, a program offered by Snohomish Conservation District. Landscape architects showed students how to take a soil test at a degraded area on their campus. The soils test was one of many steps the students took to transform the heavily compacted area into a thriving, sustainable landscape. Students also measured the area and created a planting plan to scale, accounting for mature plant growth. They selected plants for year-round visual interest, considering the various bloom times and winter color. They also paid close attention to selecting plants that would provide seeds, berries, and flowers for native pollinators, birds, and other local wildlife. Over 750 students have participated in the program across the county, in nine schools. Students enjoy applying real-world skills to address stormwater issues at their school. They have the opportunity to go beyond textbooks to make a real and lasting impact in their community. Jackson High School science teacher Gail Walters commented on the process, "these programs really help the next generation become aware of problems and solutions that are present in our community."



By 2030, Washington STEM and our statewide partners aim to **triple the number of students** of color, students from low-income and rural families, and young women who are on track to earn high-demand credentials and enter family-sustaining careers in the state.