

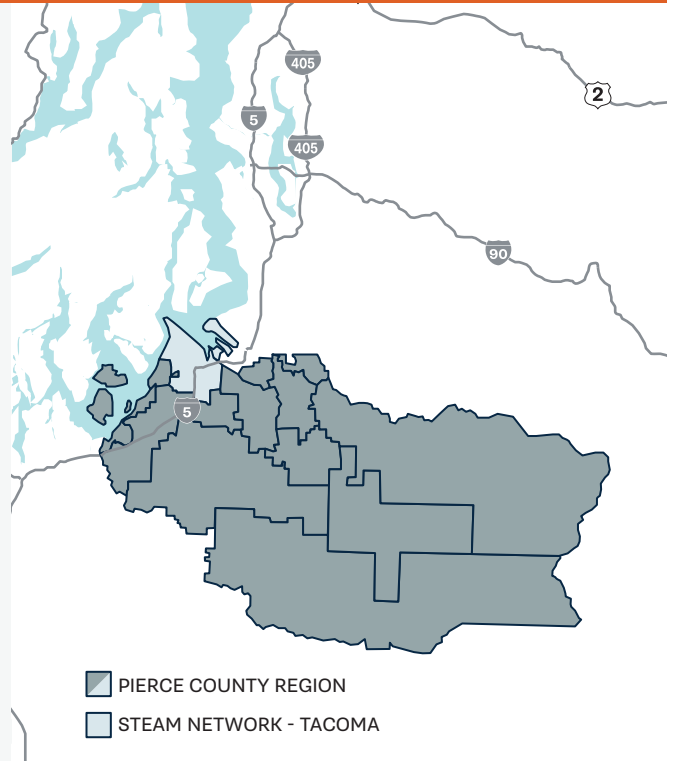


STEM BY THE NUMBERS: PIERCE COUNTY REGION

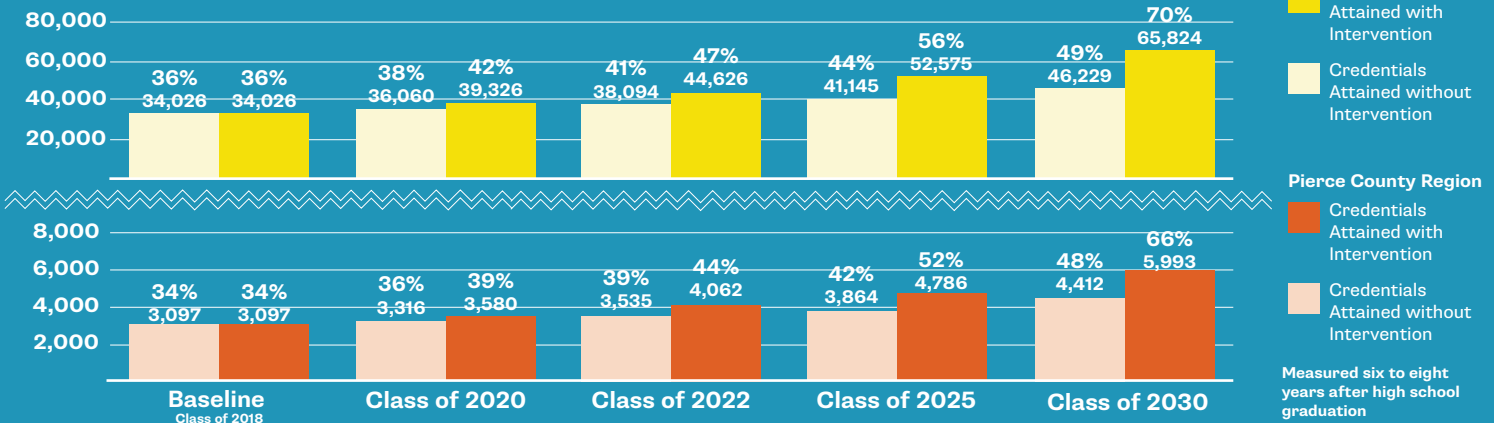
The Pierce County Region is home to growing information and technology, health-care, K-12 education, and construction industries, spanning from Gig Harbor to Eatonville. The region is made up of 13 school districts. Tacoma Public Schools is the largest district in the region and is served by the Tacoma STEAM Network. The Network's business, education, and community partners are working to close credential attainment gaps, especially for students of color and students from low-income families. They aim to increase the number of local students who become computer and IT professionals, construction and trades professionals, teachers, and healthcare professionals, which combined have 4,362 annual projected openings over the next five years.



Every Child. One Community. Cradle to Career.

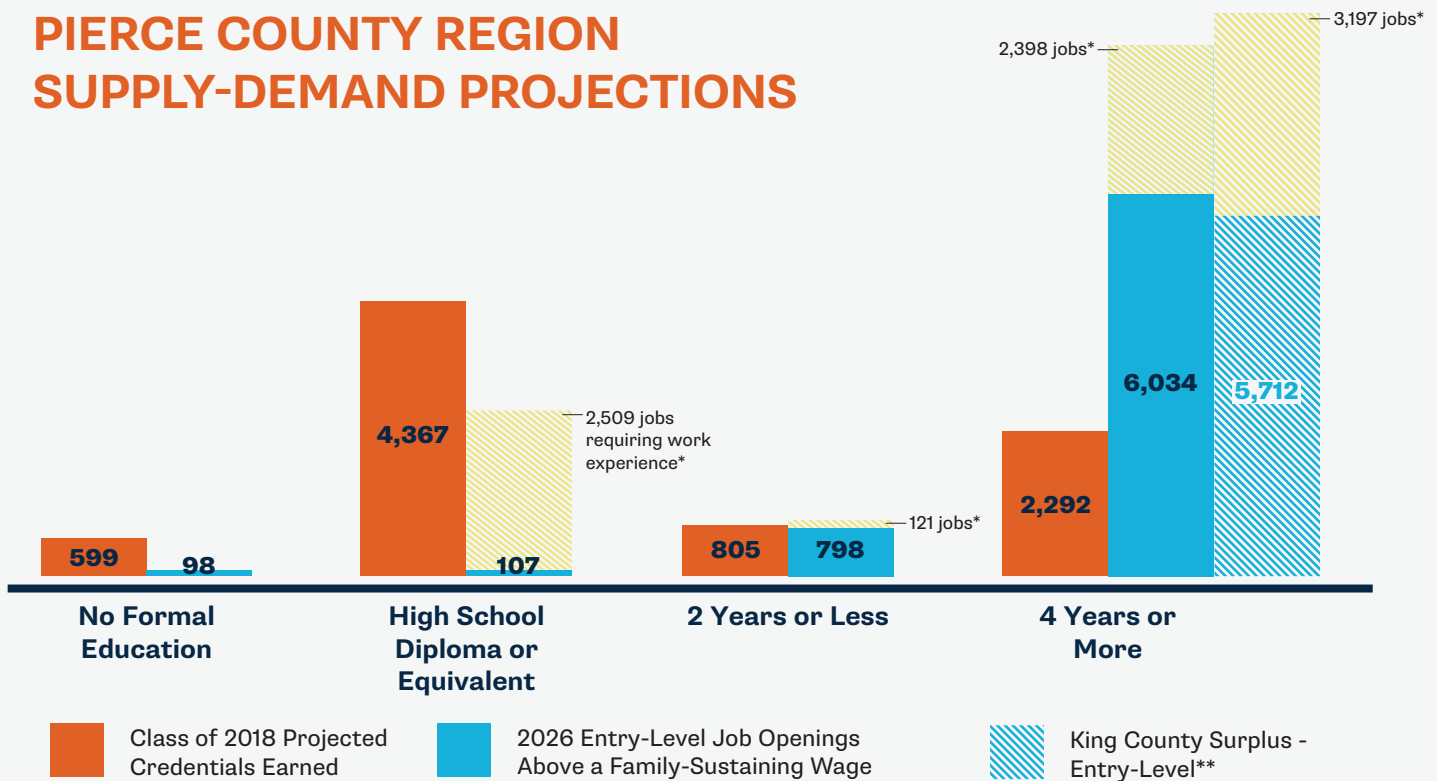


241 MORE CREDENTIALS PER YEAR = REGION ON TRACK



THE OPPORTUNITY: A STRONG DEMAND FOR STEM TALENT

PIERCE COUNTY REGION SUPPLY-DEMAND PROJECTIONS



By supporting more students to be on track to earn a high-demand credential, the Tacoma STEAM Network and its partners will ensure that up to 7,037 family-sustaining*** (those that pay a regionalized wage of \$53,927 or more a year) are available to local young adults looking to start their career in the Pierce County Region.

*Jobs requiring related work experience, and/or on-the-job training, would generally not be immediately available to high school graduates and be more competitive with a greater number of eligible applicants.

** The King County surplus represents a proportion of the surplus jobs that could be supplied by students from the Pierce County Region. The surplus is the result of fewer King County originating students than annual projected job openings in King County.

*** Family-sustaining regionalized wage is defined as the full-time wage needed to support a household of 2 adults (1 working) and 1 child, using the MIT Living Wage Calculator.



BUILDING A PATHWAY TO CREDENTIALS

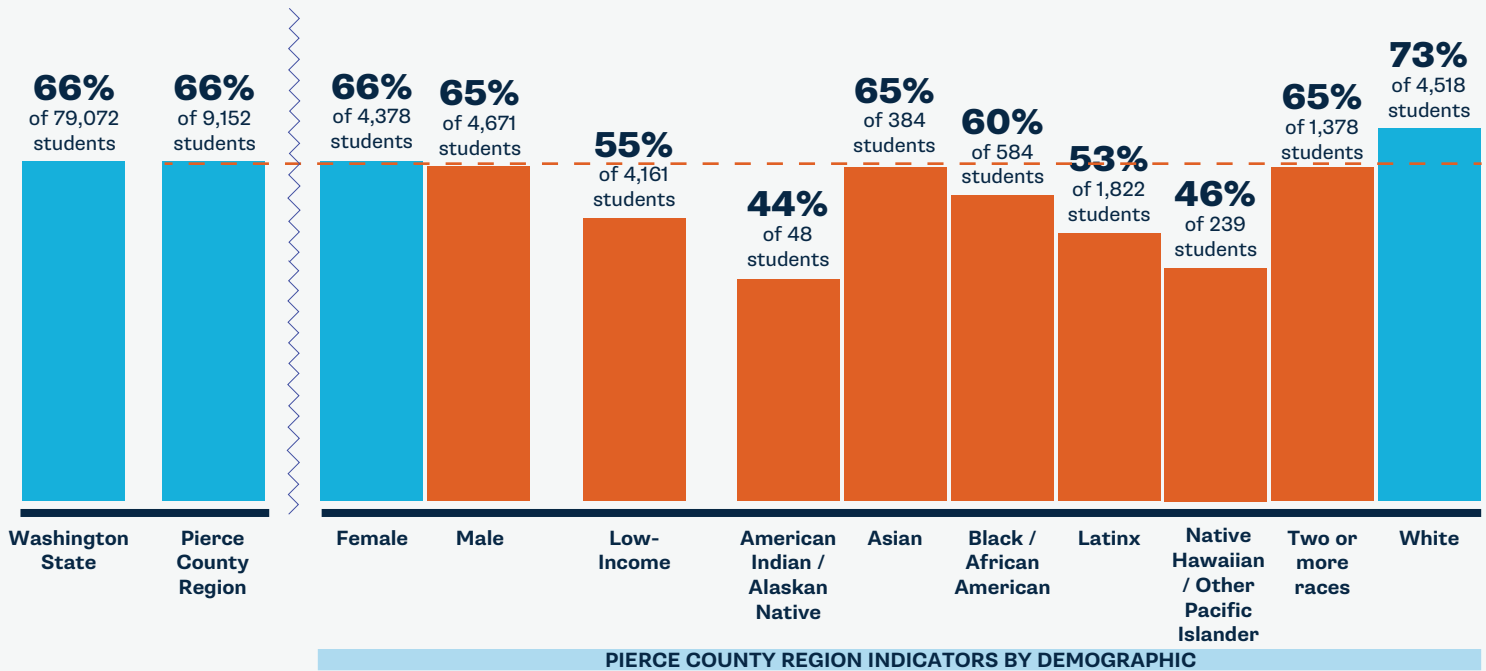
Demand for construction and trade professionals in Pierce County continues to grow. To expose more students to these careers, Southwest Washington PipeTrades/Local 26 with support from Tacoma STEAM Network, will host their High School Introduction to Pumping & Pipefitting (HIPP) summer program for the second summer. Students from Tacoma Public Schools will get first-hand experience with welding, soldering, brazing, rigging, and more. Students earn 0.5 high school credits, OSHA 10 Certification, Scissor Lift Certification, and a Certificate of Completion. HIPP's program is a tangible example of industry, education, and community working together to build a pathway to post-secondary opportunities.

PIERCE COUNTY REGION K-12 STEM INDICATORS BY DEMOGRAPHIC

KINDERGARTEN MATH READY (2018)

66% of 9,152 Pierce County Region children entering kindergarten are math ready compared to **66% of 79,072** children statewide.

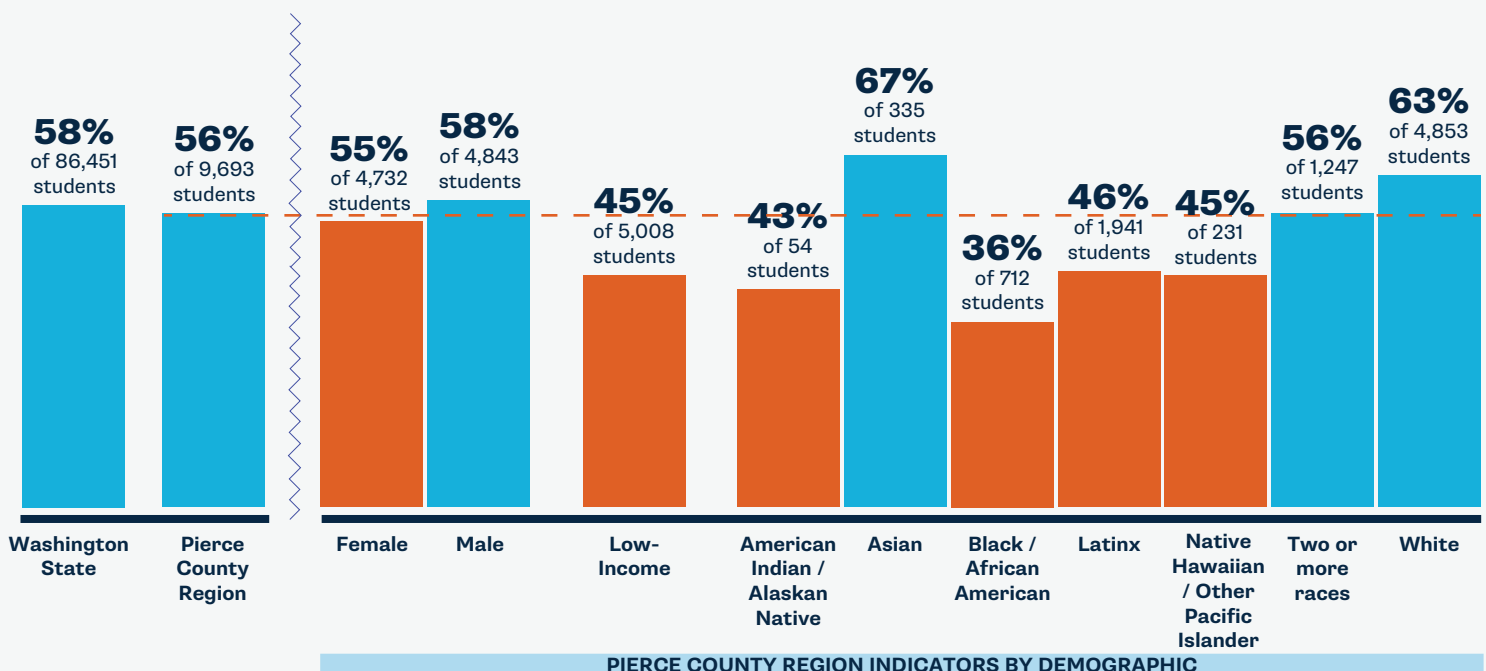
■ More than or equal to average of comparison
■ Less than average of comparison



3RD GRADE MATH (2017)

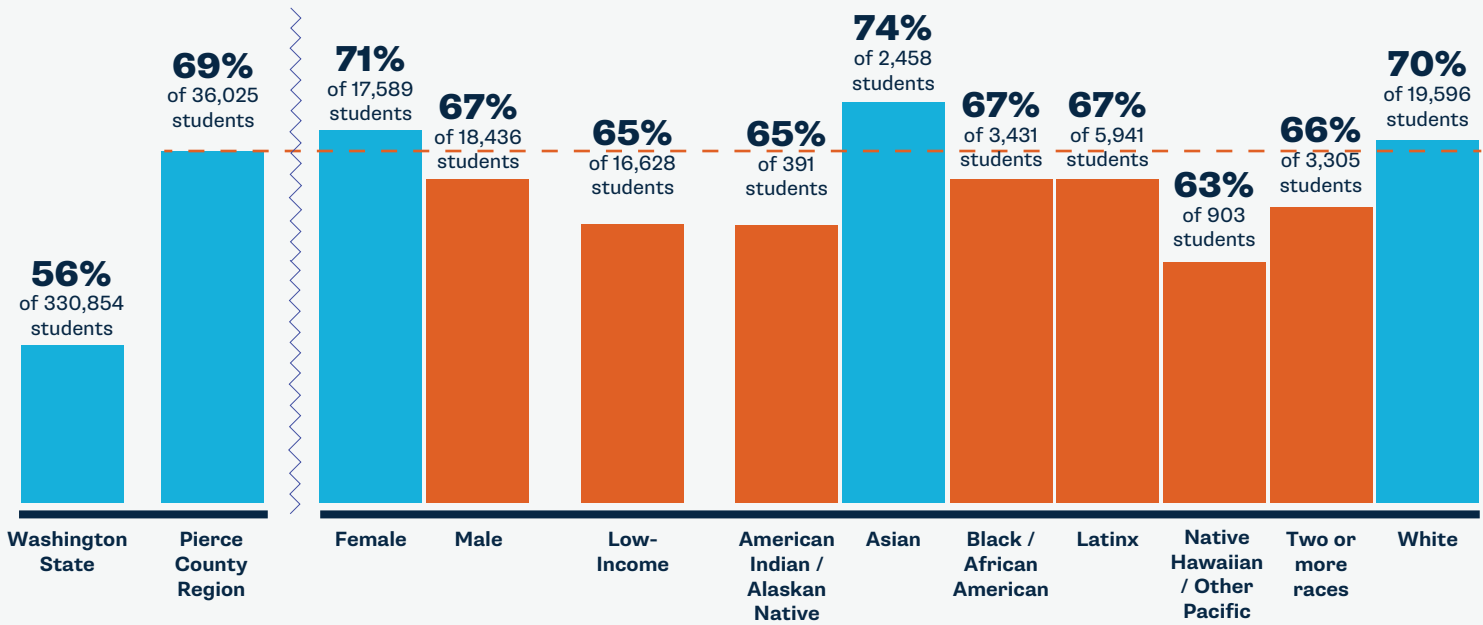
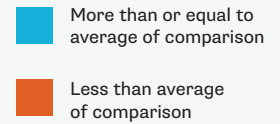
56% of 9,693 of Pierce County Region third graders meet grade level math standards compared to **58% of 86,451** third graders statewide.

■ More than or equal to average of comparison
■ Less than average of comparison



DUAL CREDIT (2017 9-12TH GRADERS)

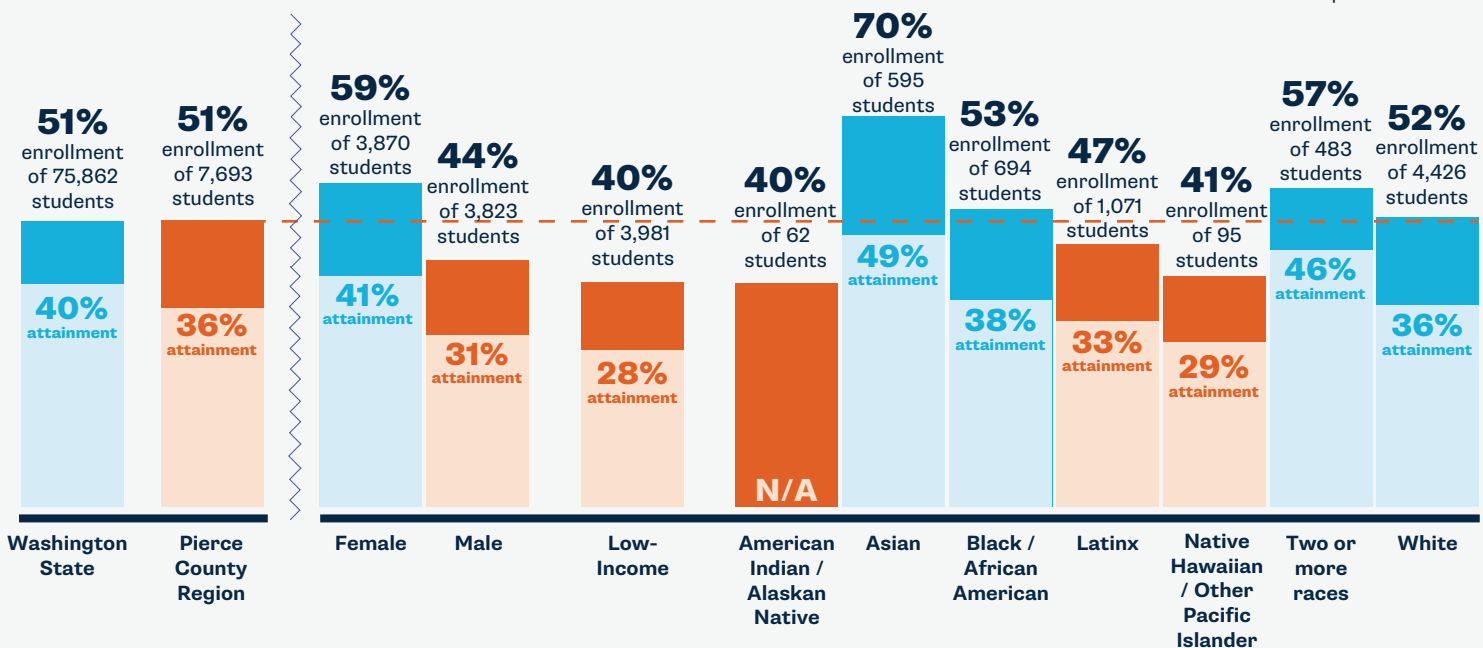
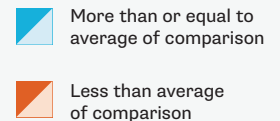
69% of 36,025 Pierce County Region high schoolers complete at least one dual credit course compared to 56% of 330,854 youth statewide.



PIERCE COUNTY REGION INDICATORS BY DEMOGRAPHIC

CREDENTIAL ENROLLMENT/ATTAINMENT (CLASS OF 2016)

51% of 7,693 of the originating ninth graders in the Pierce County Region enroll in a postsecondary program and 36% of those originating ninth graders earn a credential by age 26.



PIERCE COUNTY REGION INDICATORS BY DEMOGRAPHIC

Data citations and region-by-region analyses will be posted at www.washingtonstem.org/STEMbythenumbers.

For more information about early STEM and career pathways work in the Pierce County Region, contact Tacoma STEAM Network director Chanel Hall at steam@graduatetacoma.org.

PIERCE COUNTY REGION STEM INDICATORS

Ready for Kindergarten

While 66 percent of all Pierce County Region kids are math ready by kindergarten, high-quality early learning opportunities need to be more accessible to families of color and those that are lower-income to close math-readiness gaps.

TBD we are determining availability of high-quality early learning for families and supports for professionals in this region

66% of Pierce County Region children entering kindergarten are math ready

K-12 STEM Learning

Between kindergarten and third grade, math-readiness and skills gaps widen for many students, which is correlated with success in related areas of study. School districts need resources and assistance to remove barriers and create opportunities in STEM for all students.

TBD we are determining the STEM indicators for each school district in this region in partnership with LASER

56% of Pierce County Region third graders meet grade level math standards

Secondary Pathways

While students in the Pierce County Region are overall less likely to complete dual credit** courses than their peers across the state, students of color and low-income students experience reduced access to and completion of these courses compared to their peers.

TBD we are determining availability of dual credit courses and career pathways programs by type and subject area in this region

69% of Pierce County Region high schoolers complete at least one dual credit course

**Dual credit programs give students the opportunity to earn high school and college credit simultaneously. Completion of dual credit coursework is highly correlated with higher education enrollment and completion.

Credential Enrollment/Attainment

Of the originating ninth graders across the state, 51 percent enroll and 40 percent complete a credential. While Pierce County Region students enroll and complete at comparable rates, the region is working to expand credential pathways capacity to close opportunity gaps for key student groups.

TBD we are determining local higher education and career training program capacity in this region

51% of the originating ninth graders in the Pierce County Region enroll in a postsecondary program and 36 percent of those originating ninth graders earn a credential by age 26.



STEM by the Numbers is a series of regional reports which examines data that tells us about Washington students' access to credentials and family-sustaining jobs. Together with our partners, we are advocating for and developing regionalized, cross-sector, and longitudinal data. We highlight student outcomes above, and in future publications we will report on systems indicators, like high school course offerings and availability of STEM professional learning and supports.

Data citations and region-by-region analyses will be posted at www.washingtonstem.org/STEMbythenumbers.

For more information about early STEM and career pathways work in the Pierce County Region, contact Tacoma STEAM Network director Chanel Hall at steam@graduatetacoma.org.

REGIONAL TOP INDUSTRIES AND STEM JOBS

MEDICAL ASSISTANTS & NURSES

Annual # of Openings: 967

Credential: Certificate → Bachelor's

Average Regional Wage:
\$54,673 - \$109,918

CONSTRUCTION & TRADES PROFESSIONALS

Annual # of Openings: 1,694

Credential: Apprenticeship

Average Regional Wage:
\$57,742 - \$86,150

K-12 TEACHERS

Annual # of Openings: 727

Credential: Bachelor's

Average Regional Wage: \$63,028

COMPUTER & IT PROFESSIONALS

Annual # of Openings: 520

Credential: Certificate → Bachelor's

Average Regional Wage:
\$64,098 - \$141,808

THE CITY OF MAKERS

Tacoma is a city of makers. It hails from a legacy of makers ranging from manufacturers to artisans. The past 20 years have given rise to a burgeoning creative economy that was recognized by Etsy in 2016 with a Maker City designation. In May 2019, the Tacoma STEAM Network hosted the first inaugural Tacoma-South Sound Mini Maker Faire at the University of Washington Tacoma. With over 500 people in attendance, participants learned from makers of all ages and backgrounds. From 3-D printing, design, and eco-conscious fabrication, to woodworking and the fundamentals of environmental sustainability, the Tacoma-South Sound Mini Maker Faire celebrated, amplified, and empowered the DIY spirit that thrives in Tacoma.



By 2030, Washington STEM and our statewide partners aim to **triple the number of students** of color, students from low-income and rural families, and young women who are on track to earn high-demand credentials and enter family-sustaining careers in the state.