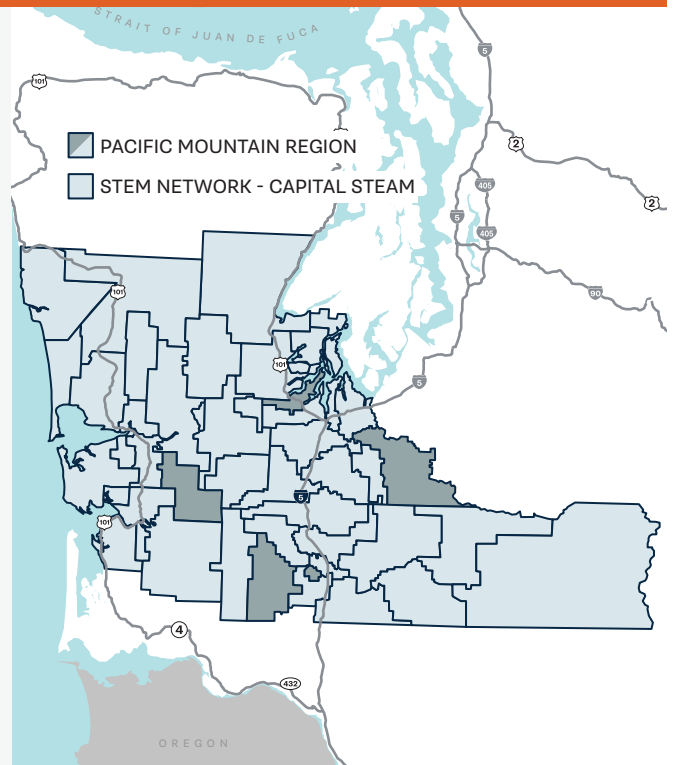


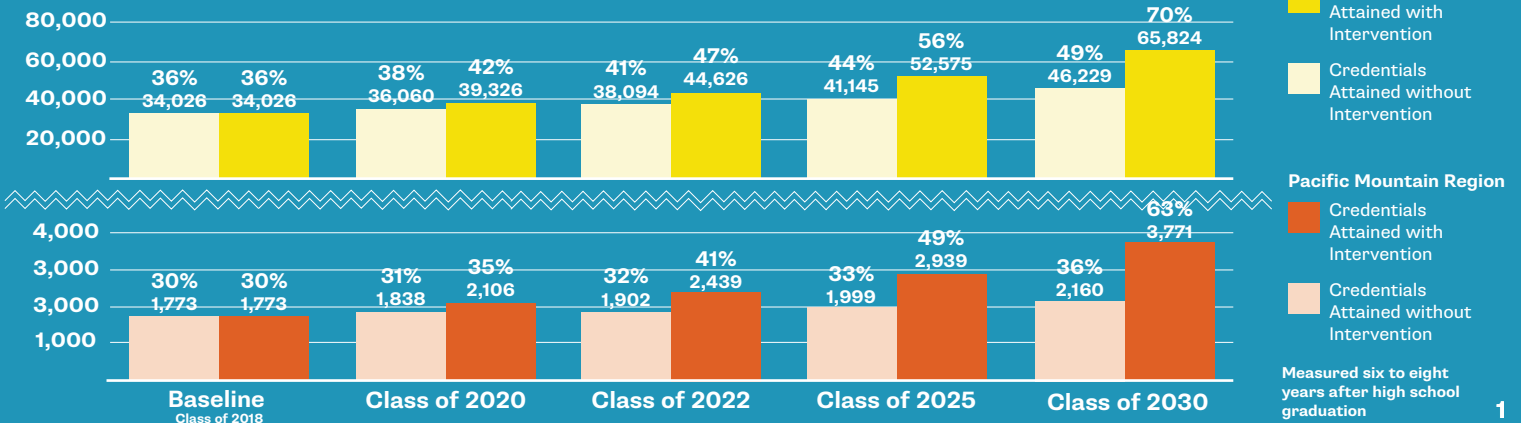


STEM BY THE NUMBERS: PACIFIC MOUNTAIN REGION

The Pacific Mountain Region is home to growing healthcare, wood products, education, and construction industries, spanning from Olympia to Westport. The region is made up of 44 school districts, 39 of which are members of the Capital STEAM Network. The Network's business, education, and community partners are working to close credential attainment gaps, especially for students of color and students from low-income families. They aim to increase the number of local students who become teachers, construction apprentices, wood products sector workers, and healthcare professionals, which combined have 1,944 annual projected openings over the next five years.

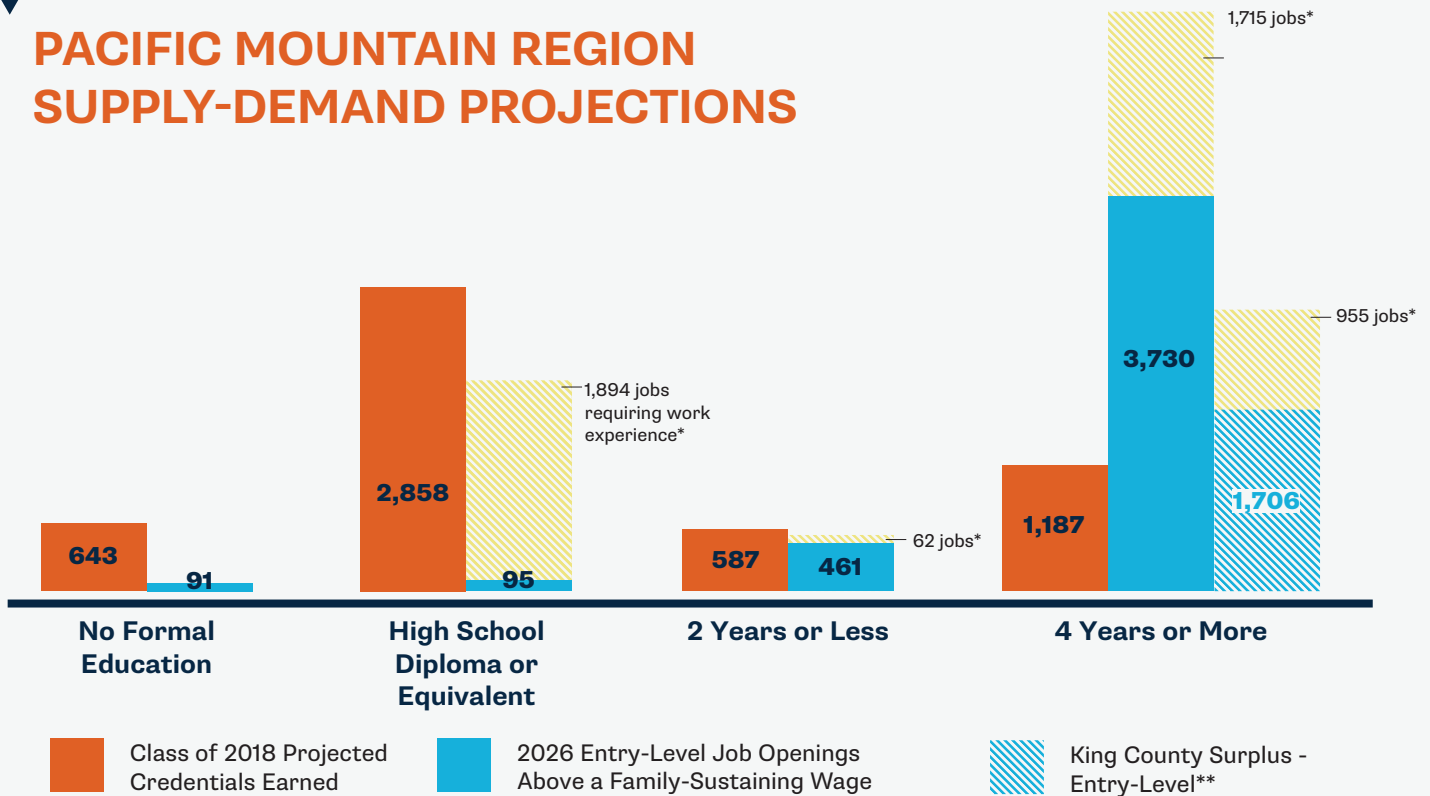


166 MORE CREDENTIALS PER YEAR = REGION ON TRACK



THE OPPORTUNITY: A STRONG DEMAND FOR STEM TALENT

PACIFIC MOUNTAIN REGION SUPPLY-DEMAND PROJECTIONS



By supporting more students to be on track to earn a high-demand credential, the Capital STEAM Network and partners will ensure that up to 4,377 family-sustaining*** (those that pay a regionalized wage of \$46,970 or more a year) are available to local young adults looking to start their career in the Pacific Mountain Region.

*Jobs requiring related work experience, and/or on-the-job training, would generally not be immediately available to high school graduates and be more competitive with a greater number of eligible applicants.

** The King County surplus represents a proportion of the surplus jobs that could be supplied by students from the Pacific Mountain Region. The surplus is the result of fewer King County originating students than annual projected job openings in King County.

*** Family-sustaining regionalized wage is defined as the full-time wage needed to support a household of 2 adults (1 working) and 1 child, using the MIT Living Wage Calculator.

Photo: Bill Wagner, The Daily News



OPPORTUNITIES IN WOOD PRODUCTS SECTOR

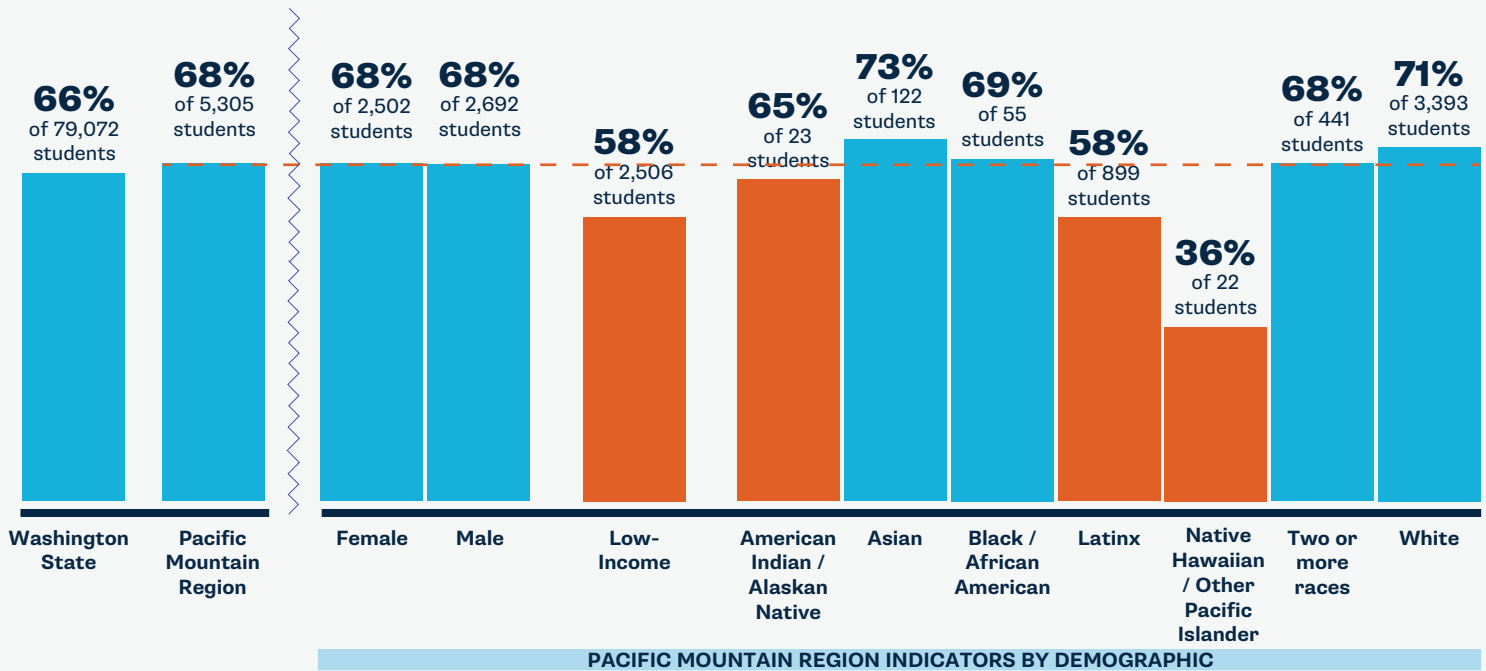
With an annual total employment of over 5,500 in the region, the wood products sector offers family-wage jobs in forestry and logging support, wood window and door manufacturing, and paper manufacturing. In Kalama, high school science teacher Chris Stone teaches a Natural Resources class using an Advanced Forestry Framework. He developed the dual-credit course in partnership with the Pacific Education Institute (PEI) and Pacific Mountain Workforce Development Council to help students gain forest management skills. Advances in manufacturing, such as the development of cross-laminated timber and other mass timber products, should result in a rapid growth and demand for wood products.

PACIFIC MOUNTAIN REGION K-12 STEM INDICATORS BY DEMOGRAPHIC

KINDERGARTEN MATH READY (2018)

68% of 5,305 Pacific Mountain Region children entering kindergarten are math ready compared to **66% of 79,072** children statewide.

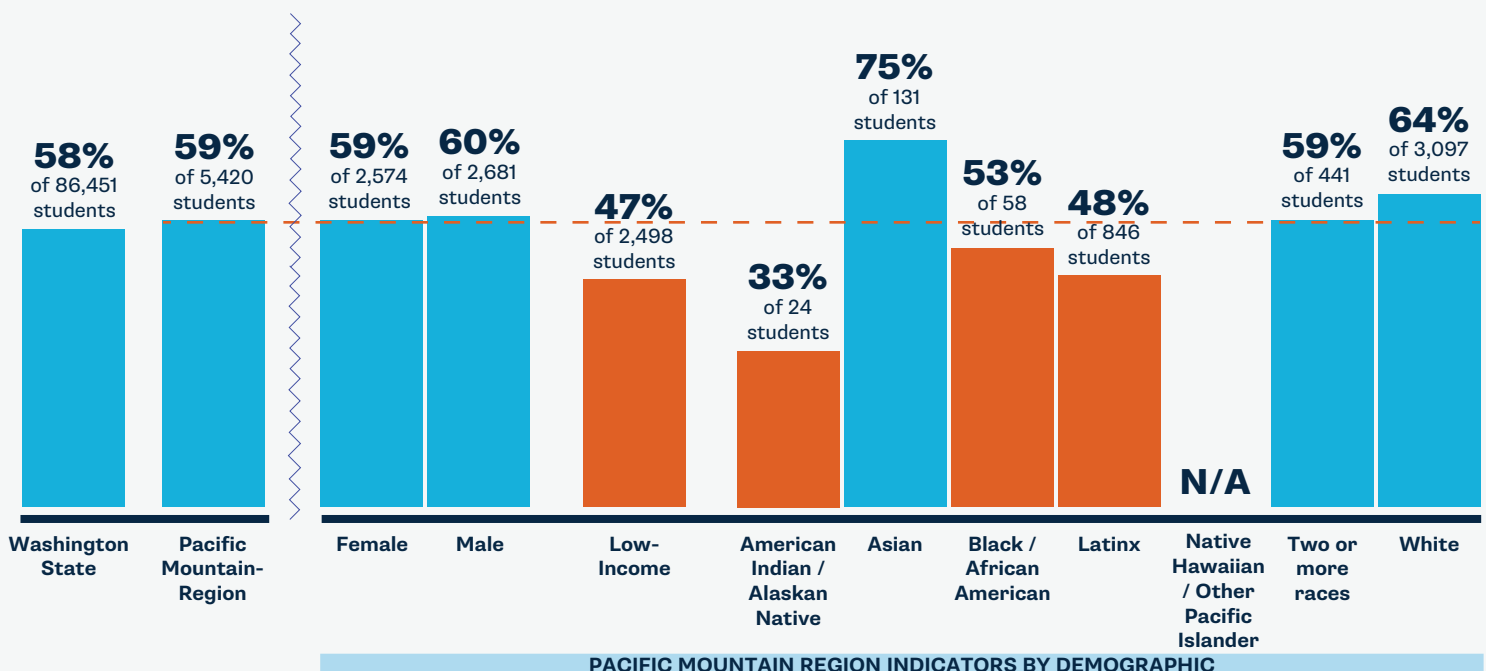
More than or equal to average of comparison
Less than average of comparison



3RD GRADE MATH (2017)

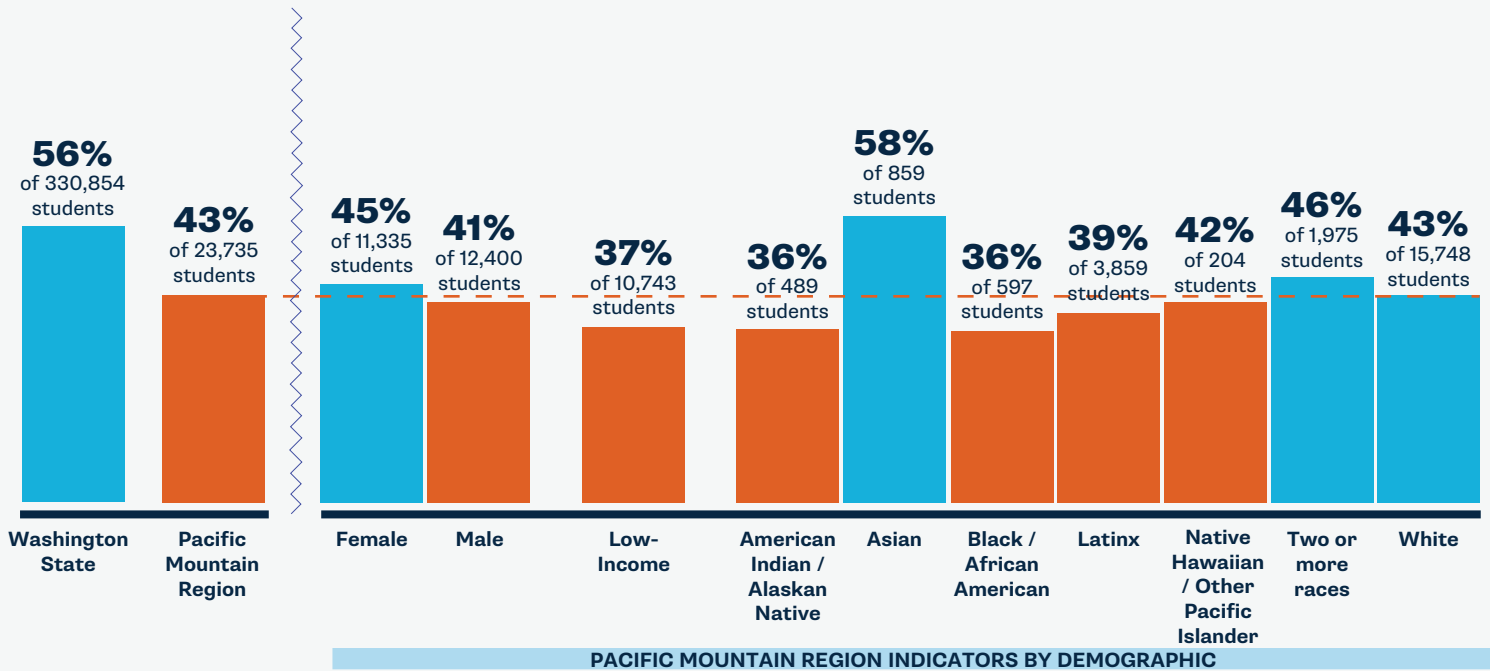
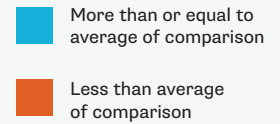
59% of 5,420 of Pacific Mountain Region third graders meet grade level math standards compared to **58% of 86,451** third graders statewide.

More than or equal to average of comparison
Less than average of comparison



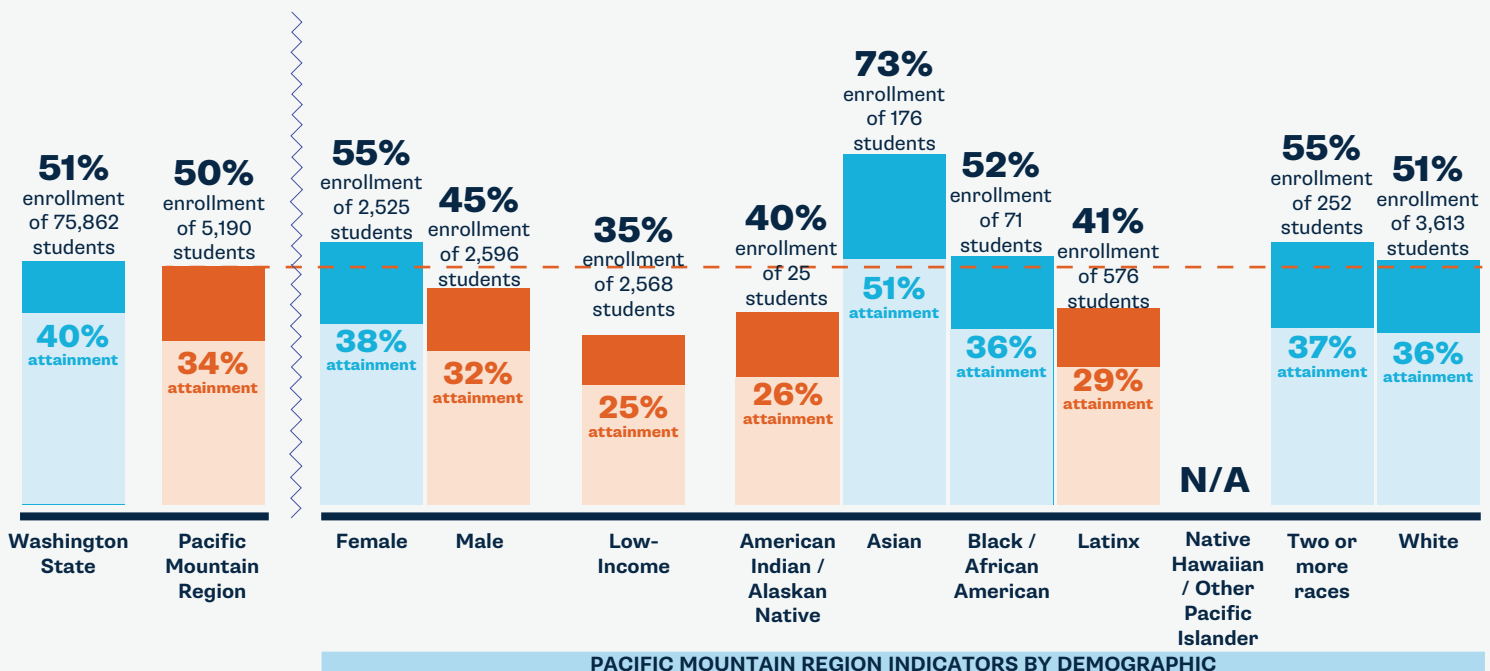
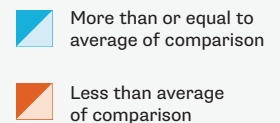
DUAL CREDIT (2017 9-12TH GRADERS)

43% of 23,735 Pacific Mountain Region high schoolers complete at least one dual credit course compared to **56% of 330,854** youth statewide.



CREDENTIAL ENROLLMENT/ATTAINMENT (CLASS OF 2016)

50% of 5,190 of the originating ninth graders in the Pacific Mountain Region enroll in a postsecondary program and **34%** of those originating ninth graders earn a credential by age 26.



Data citations and region-by-region analyses will be posted at www.washingtonstem.org/STEMbythenumbers.

For more information on the Capital STEAM Network and its work in the Pacific Mountain Region, contact Network Director Lorie Thompson at lthompson@esd113.org.

PACIFIC MOUNTAIN REGION STEM INDICATORS

Ready for Kindergarten

While 68 percent of all Pacific Mountain Region kids are math ready by kindergarten, high-quality early learning opportunities need to be more accessible to families of color and those that are lower-income to close math-readiness gaps.

TBD we are determining availability of high-quality early learning for families and supports for professionals in this region

68% of Pacific Mountain Region children entering kindergarten are math ready

K-12 STEM Learning

Between kindergarten and third grade, math-readiness and skills gaps widen for many students, which is correlated with success in related areas of study. School districts need resources and assistance to remove barriers and create opportunities in STEM for all students.

TBD we are determining the STEM indicators for each school district in this region in partnership with LASER

59% of Pacific Mountain Region third graders meet grade level math standards

Secondary Pathways

While students in the Pacific Mountain Region are overall less likely to complete dual credit** courses than their peers across the state, students of color and low-income students experience reduced access to and completion of these courses compared to their peers.

TBD we are determining availability of dual credit courses and career pathways programs by type and subject area in this region

43% of Pacific Mountain Region high schoolers complete at least one dual credit course

**Dual credit programs give students the opportunity to earn high school and college credit simultaneously. Completion of dual credit coursework is highly correlated with higher education enrollment and completion.

Credential Enrollment/Attainment

Of the originating ninth graders across the state, 51 percent enroll and 40 percent complete a credential. While Pacific Mountain Region students enroll and complete at comparable rates, the region is working to expand credential pathways capacity to close opportunity gaps for key student groups.

TBD we are determining local higher education and career training program capacity in this region

50% of the originating ninth graders in the Pacific Mountain Region enroll in a postsecondary program and 34 percent of those originating ninth graders earn a credential by age 26.



STEM by the Numbers is a series of regional reports which examines data that tells us about Washington students' access to credentials and family-sustaining jobs. Together with our partners, we are advocating for and developing regionalized, cross-sector, and longitudinal data. We highlight student outcomes above, and in future publications we will report on systems indicators, like high school course offerings and availability of STEM professional learning and supports.

Data citations and region-by-region analyses will be posted at www.washingtonstem.org/STEMbythenumbers.

For more information on the Capital STEAM Network and its work in the Pacific Mountain Region, contact Network Director Lorie Thompson at lthompson@esd113.org.

REGIONAL TOP INDUSTRIES AND STEM JOBS

MEDICAL ASSISTANTS & NURSES

Annual # of Openings: 428
Credential: Certificate → Bachelor's
Average Regional Wage: \$49,104 → \$97,400

WOOD PRODUCTS SECTOR PROFESSIONALS

Annual # of Openings: 204
Credential: Associate's, Apprenticeship and Bachelor's
Average Regional Wage: \$49,012 → \$71,239

CONSTRUCTION & TRADES PROFESSIONALS

Annual # of Openings: 703
Credential: Apprenticeship
Average Regional Wage: \$59,088 → \$96,541

K-12 TEACHERS

Annual # of Openings: 489
Credential: Bachelor's
Average Regional Wage: \$61,719

BIG BROTHERS BIG SISTERS LOVES STEAM!

Last year, our youth in South Pacific County put on a STEAM fair where they demonstrated the projects they had worked so hard on over the past few months. Hailey and Taylor showed off their “elephant toothpaste” experiment, Mya and Alex showed a beautiful art piece made out of recycled materials, and Lindsey and Mason demonstrated the robotic car they were building. These STEAM projects gave both our Bigs and Littles different ways to connect with each other and bond over a shared interest. Seeing other people admire the work they had put so much time and effort into boosted their confidence and allowed them to take pride in their work. Since STEAM is so broad, each match was able to really connect with a specific aspect and shine in their respective areas. Our rural youth don't often get a chance to do STEAM activities, and seeing their confidence grow in these areas was absolutely fantastic!



By 2030, Washington STEM and our statewide partners aim to **triple the number of students** of color, students from low-income and rural families, and young women who are on track to earn high-demand credentials and enter family-sustaining careers in the state.