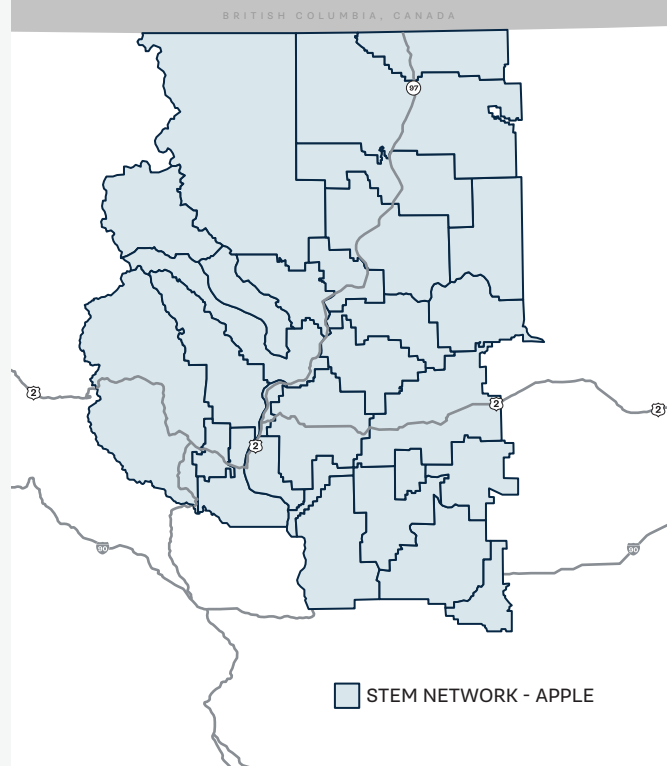




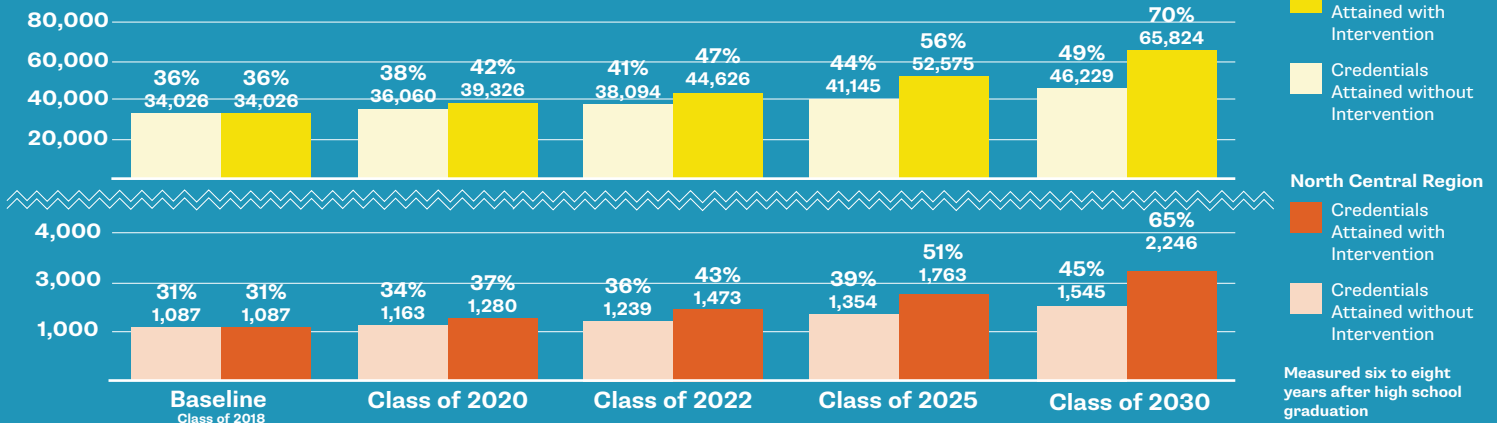
STEM BY THE NUMBERS: NORTH CENTRAL REGION



The North Central Region, spanning from Moses Lake to Okanogan, is home to growing information technology, healthcare, K-12 education, agriculture and construction industries. Twenty-seven school districts in the North Central Region are partners in the Apple STEM Network. The Network's business, education, and community partners are working to close credential attainment gaps, especially for rural communities, students of color, and students from low-income families. They aim to increase the number of local students who become technology, education, healthcare, and trades professionals, which combined have 1,155 annual projected openings over the next five years.

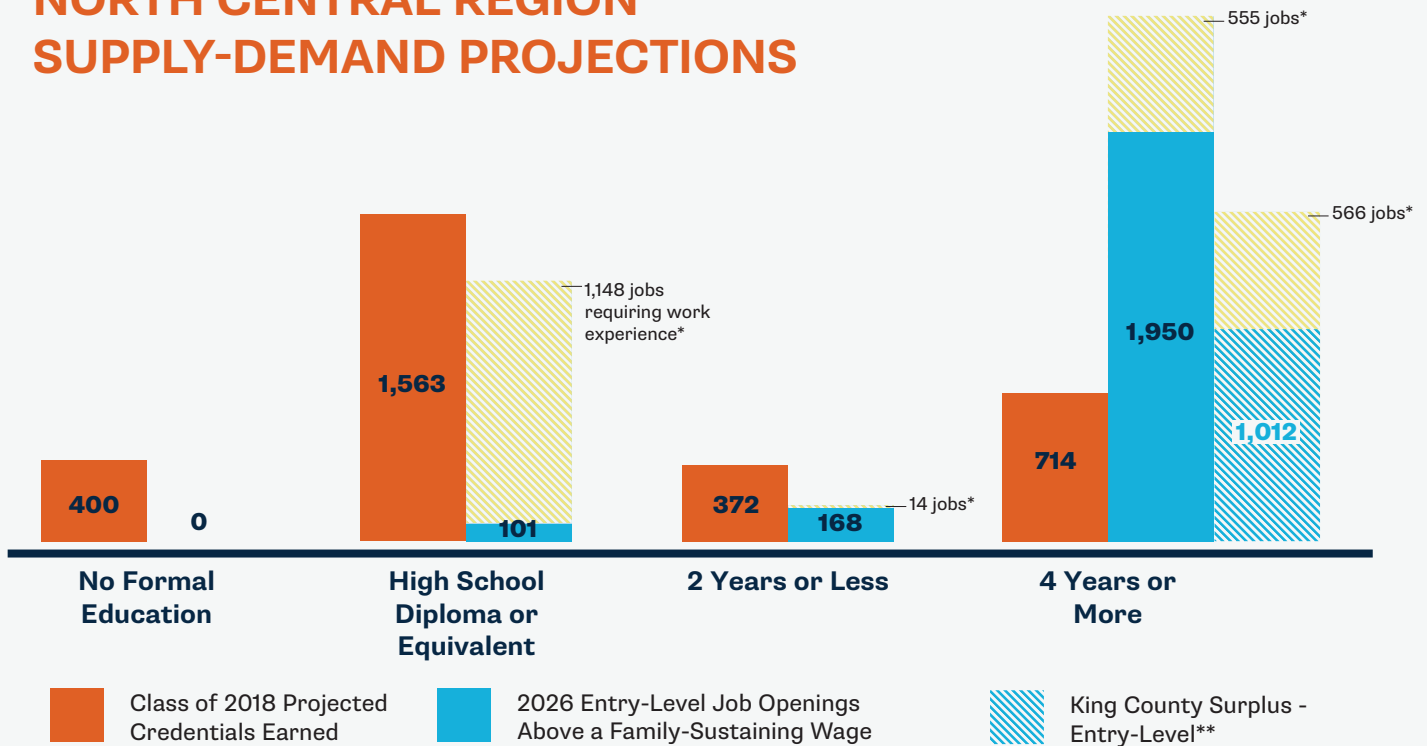


97 MORE CREDENTIALS = REGION ON TRACK



THE OPPORTUNITY: A STRONG DEMAND FOR STEM TALENT

NORTH CENTRAL REGION SUPPLY-DEMAND PROJECTIONS

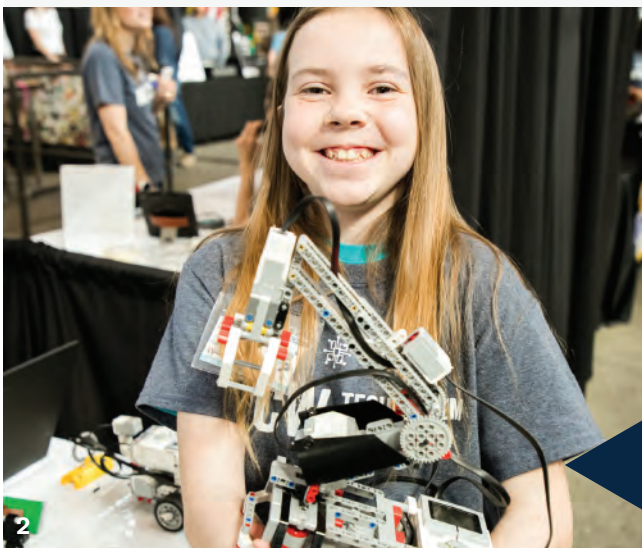


By supporting more students to be on track to earn a high-demand credential, the Apple STEM Network and its partners in the North Central Region will ensure that up to 2,219 family-sustaining*** jobs (those that pay a regionalized wage of \$44,842 or more a year) are available to local young adults looking to start their career in the North Central Region.

*Jobs requiring related work experience, and/or on-the-job training, would generally not be immediately available to high school graduates and be more competitive with a greater number of eligible applicants.

** The King County surplus represents a proportion of the surplus jobs that could be supplied by students from the North Central Region. The surplus is the result of fewer King County originating students than annual projected job openings in King County.

*** Family-sustaining regionalized wage is defined as the full-time wage needed to support a household of 2 adults (1 working) and 1 child, using the MIT Living Wage Calculator.





NCW TECH AND STEM SHOWCASE

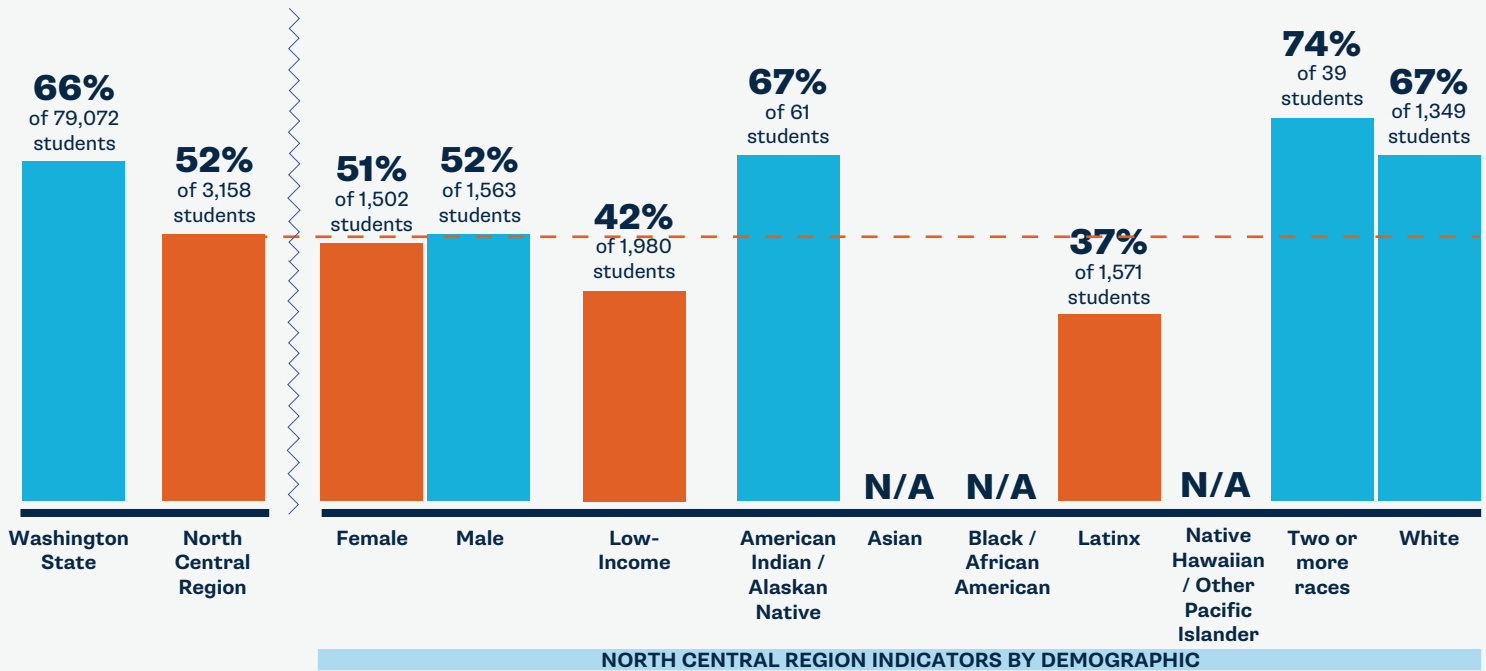
The Greater Wenatchee Area Technology Alliance and the Apple STEM Network annually host the NCW Tech & STEM Showcase. This community event recognizes and celebrates our outstanding educators and students. Focused on technology and STEM education awareness, this event draws more than 1,200 attendees to interactive displays which include: drones, video game programming, robotics, app design, 3-D printing, and even a tech-savvy mariachi band! Students and teachers from four counties: Chelan, Douglas, Grant, and Okanogan) are highlighted in the showcase each year.

NORTH CENTRAL REGION K-12 STEM INDICATORS BY DEMOGRAPHIC

KINDERGARTEN MATH READY (2018)



52% of 3,158 North Central Region children entering kindergarten are math ready compared to **66% of 79,072** children statewide.

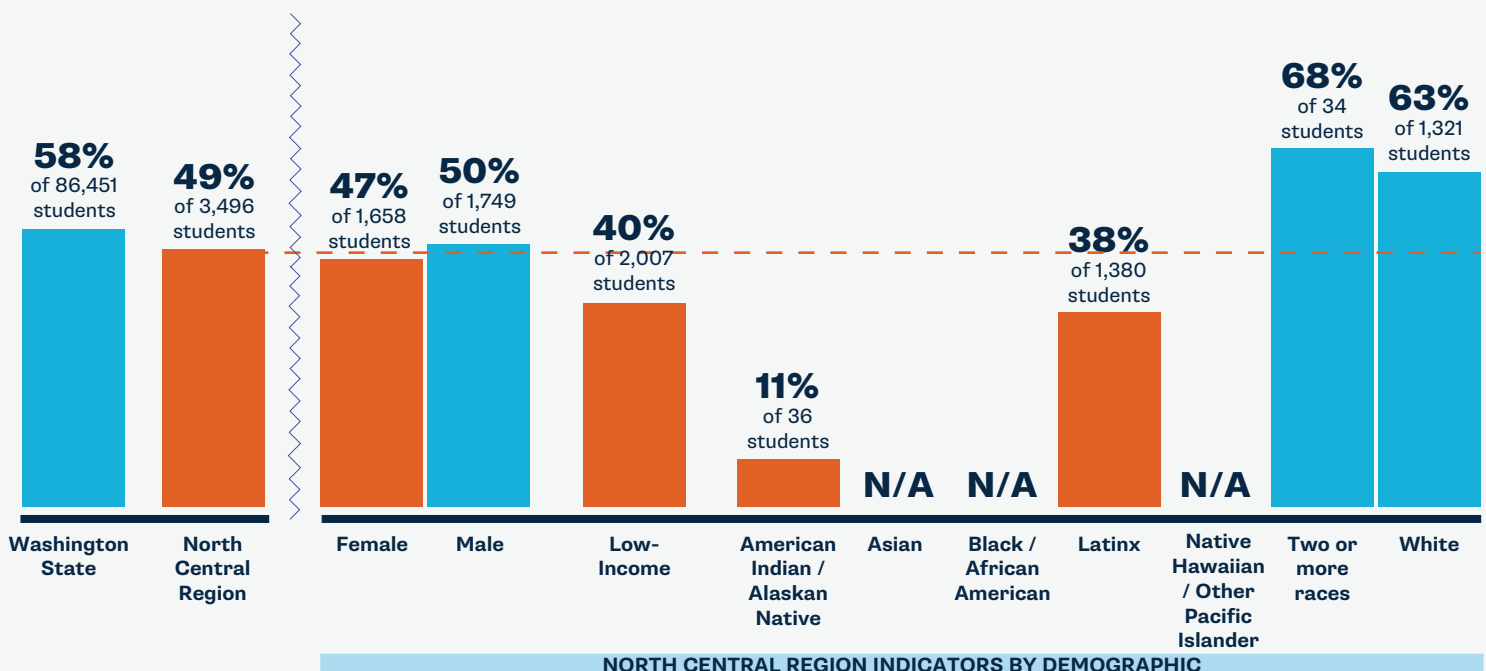
 More than or equal to average of comparison
 Less than average of comparison



3RD GRADE MATH (2017)

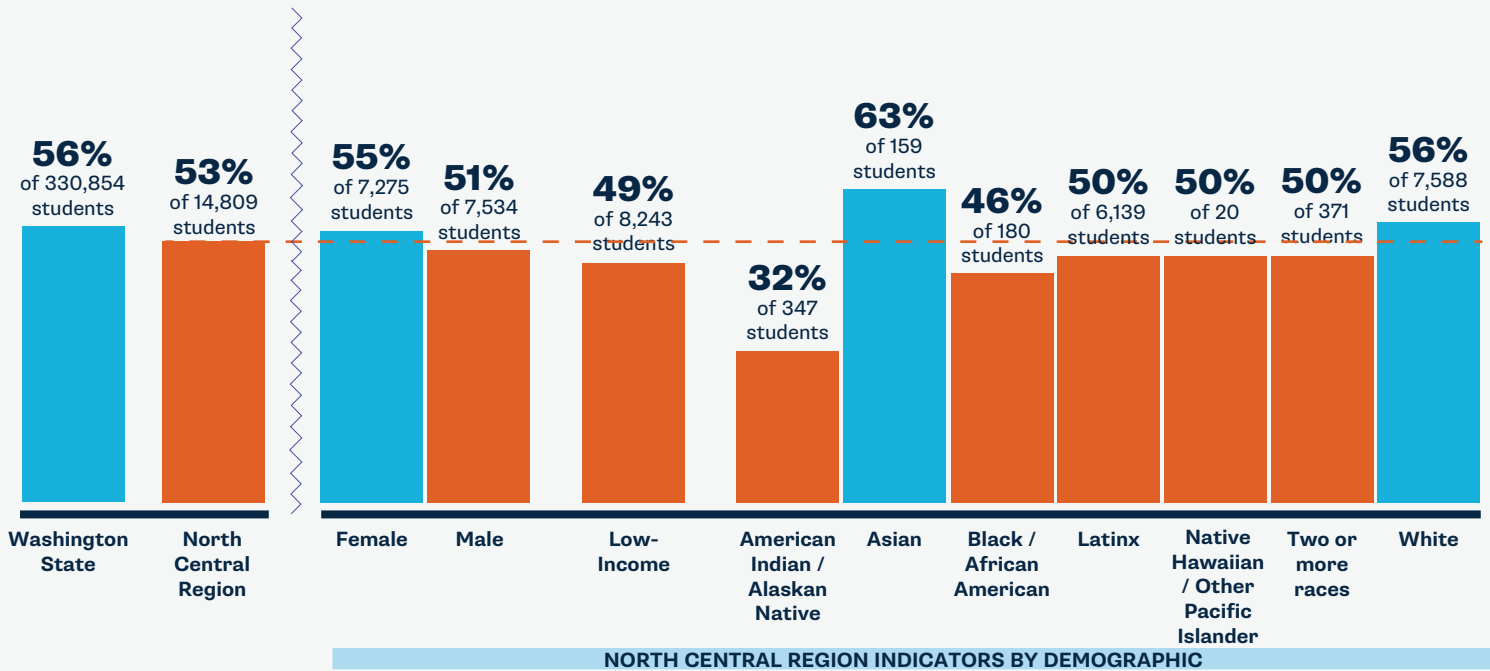
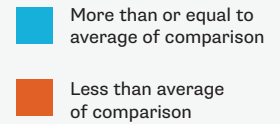
49% of 3,496 of North Central Region third graders meet grade level math standards compared to **58% of 86,451** third graders statewide.

 More than or equal to average of comparison
 Less than average of comparison



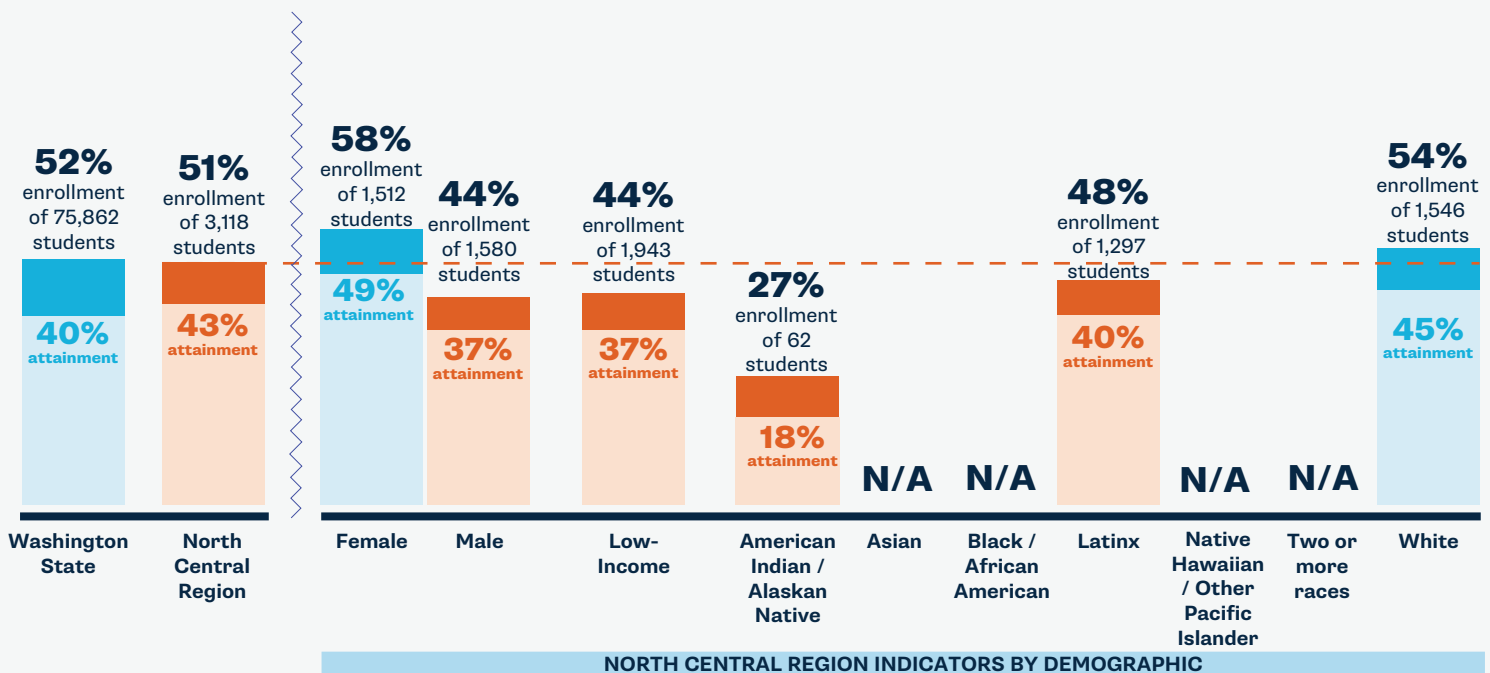
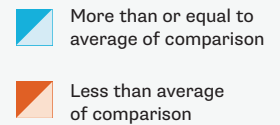
DUAL CREDIT (2017 9-12TH GRADERS)

53% of 14,809 North Central Region high schoolers complete at least one dual credit course compared to 56% of 330,854 youth statewide.



CREDENTIAL ENROLLMENT/ATTAINMENT (CLASS OF 2016)

51% of 3,118 of the originating ninth graders in the North Central Region enroll in a postsecondary program and 43% of those originating ninth graders earn a credential by age 26.



Data citations and region-by-region analyses will be posted at www.washingtonstem.org/STEMbythenumbers.

For more information on the Apple STEM Network and its work in the North Central Region, contact Network Director Sue Kane at suek@ncesd.org.

NORTH CENTRAL REGION STEM INDICATORS

Ready for Kindergarten

While 48 percent of all North Central Region kids are math ready by kindergarten, high-quality early learning opportunities need to be more accessible to families of color and those that are lower-income to close math-readiness gaps.

TBD we are determining availability of high-quality early learning for families and supports for professionals in this region

48% of North Central Region children entering kindergarten are math ready

K-12 STEM Learning

Between kindergarten and third grade, math-readiness and skills gaps widen for many students, which is correlated with success in related areas of study. School districts need resources and assistance to remove barriers and create opportunities in STEM for all students.

TBD we are determining the STEM indicators for each school district in this region in partnership with LASER

49% of North Central Region third graders meet grade level math standards

Secondary Pathways

While students in the North Central Region are overall less likely to complete dual credit** courses than their peers across the state, students of color and low-income students experience reduced access to and completion of these courses compared to their peers.

TBD we are determining availability of dual credit courses and career pathways programs by type and subject area in this region

53% of North Central Region high schoolers complete at least one dual credit course

**Dual credit programs give students the opportunity to earn high school and college credit simultaneously. Completion of dual credit coursework is highly correlated with higher education enrollment and completion.

Credential Enrollment/Attainment

Of the originating ninth graders across the state, 51 percent enroll and 40 percent complete a credential. While North Central Region students enroll and complete at comparable rates, the region is working to expand credential pathways capacity to close opportunity gaps for key student groups.

TBD we are determining local higher education and career training program capacity in this region

51% of the originating ninth graders in the North Central Region enroll in a postsecondary program and 43 percent of those originating ninth graders earn a credential by age 26.



STEM by the Numbers is a series of regional reports which examines data that tells us about Washington students' access to credentials and family-sustaining jobs. Together with our partners, we are advocating for and developing regionalized, cross-sector, and longitudinal data. We highlight student outcomes above, and in future publications we will report on systems indicators, like high school course offerings and availability of STEM professional learning and supports.

Data citations and region-by-region analyses will be posted at www.washingtonstem.org/STEMbythenumbers.

For more information on the Apple STEM Network and its work in the North Central Region, contact Network Director Sue Kane at suek@ncesd.org.

REGIONAL TOP INDUSTRIES AND STEM JOBS

NURSES

Annual # of Openings: 174

Credential: Bachelor's

Average Regional Wage:
\$78,861 → \$116,736

CONSTRUCTION & TRADES PROFESSIONALS

Annual # of Openings: 530

Credential: Apprenticeship

Average Regional Wage:
\$46,415 → \$92,147

K-12 TEACHERS

Annual # of Openings: 307

Credential: Bachelor's

Average Regional Wage: \$60,680

COMPUTER & IT PROFESSIONALS

Annual # of Openings: 94

Credential: Associate's → Bachelor's

Average Regional Wage:
\$48,475 → \$103,933

CAREER CONNECTED LEARNING IN NORTH CENTRAL WASHINGTON

The Apple STEM Network is a co-lead with the North Central Workforce Development Council, and with a myriad of regional partners, in an effort to build pathways to living wage careers in agriculture, technology, manufacturing, energies, and healthcare in five counties (Chelan, Douglas, Grant, Adams, and Okanogan). By September 2019, the North Central Career Connect effort will create opportunities for 350+ disadvantaged youth to build a comprehensive career plan, an adult mentor, and a worksite learning experience like an internship, pre-apprenticeship, or youth apprenticeship. This work is made possible through strategic partnerships with our regional educators, NCESD, GWATA, WorkSource, Wenatchee Valley College, Big Bend Community College, WACMHC, AJAC, and many others.



By 2030, Washington STEM and our statewide partners aim to **triple the number of students** of color, students from low-income and rural families, and young women who are on track to earn high-demand credentials and enter family-sustaining careers in the state.